

Pulsar *ellipse premium* 500/650/800/1200 UPSs



Professional power protection for workstations and small servers

The productivity of your business depends on the flawless operation of servers and workstations.

And to make sure they stay up and running, no matter what, you need perfect power protection.

With a **Pulsar *ellipse premium*** UPS, you get the protection you need plus:

- ▶ optimum price/performance ratio
- ▶ easy installation and operation
- ▶ maximum backup times for your most critical applications

www.mgeups.com



NOTHING WILL STOP YOU NOW

MGE
UPS SYSTEMS

Different models for different applications



500

650

800

1200

The Pulsar *ellipse premium* range is designed to provide perfect power protection for professional workstations and small servers operating under Windows 2000/NT, Linux, Netware, SCO or Apple Mac.

The range comprises four power ratings that can communicate via either a USB or a serial port, depending on the model. USB models are automatically integrated by Windows 2000 and Apple Mac OS.



Backup time examples

Pulsar <i>ellipse premium</i>	500 & 500 USB	650 S	800 USB	1200S
	Communication	USB	Serial	USB
1 workstation running Windows 2000	10 min		25 min	
1 server running Windows 2000	15-20 min		30 min	
2 servers running Windows 2000			10 min	
1 server running NT/Linux/Netware/SCO		30 min		1 hour
2 servers running NT/Linux/Netware/SCO		10 min		20 min
1 Apple G4 workstation + peripherals	10 min		25 min	
1 Apple G4 server	15 min		30 min	
2 Apple G4 servers			10 min	

Maximum backup times for your most critical applications

Pulsar *ellipse premium* offers special functions providing critical applications with longer backup times.

► Pulsar *ellipse premium* 500

Some peripherals (printers, scanners) simply require surge protection. Connect them to the special outlet on the Pulsar *ellipse premium* 500 for continuous surge protection, without consuming precious battery power during an outage.



► Pulsar *ellipse premium* 650/800/1200

Using the programmable PowerShare outlets, you can assign maximum backup time to the most critical applications.

This operation is extremely simple using the Personal Solution-Pac power management software.

Your UPS can now deliver longer backup times to critical loads, at no extra cost!



1. This outlet can be automatically shut down after a few minutes on battery power. This reduces the load on the UPS.

2. As a result, maximum backup time is available for the other outlets supplying the critical loads.

Optimum price/performance ratio

Pulsar ellipse premium UPSs use line-interactive technology to guarantee effective protection for your workstations and servers, even in highly disturbed electrical environments.

► universal

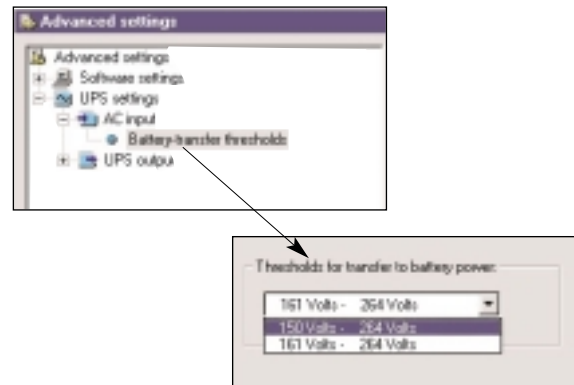
The wide input-voltage range avoids frequent transfers to battery power.
Maximum backup time is conserved for real problems.

► adaptable

The thresholds for transfer to battery power may be adjusted using the supplied Solution-Pac software.

► quality power

Voltage variations are automatically corrected by the booster device, ensuring high-quality power for computer systems without frequent transfers to battery power.



Wide input-voltage range, easy to set

Easy installation and operation

Pulsar ellipse premium is a simple and complete power protection solution for your computer system.

► Everything from the UPS to software to cables

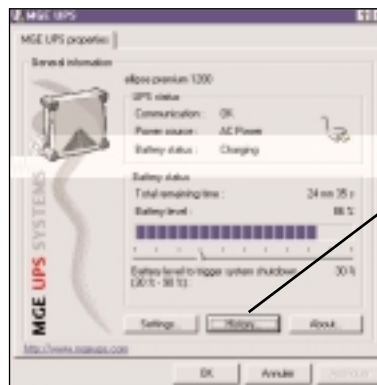
A complete package

Every Pulsar ellipse premium UPS, whether USB or serial, comes with Personal Solution-Pac power management software. The USB or serial cable is always included.

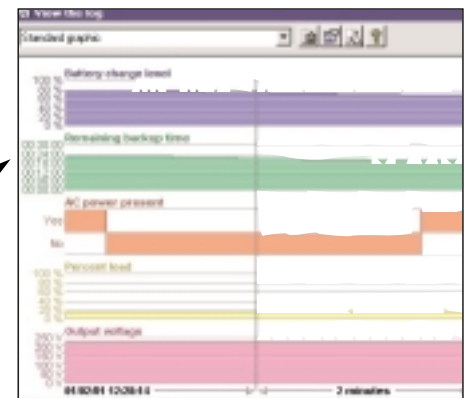


► Complete information, clearly presented

The different screens indicate the status of the UPS in a very simple manner.



UPS status at a glance



Graphic display of log

► Guaranteed compatibility, easy installation

Whether your computer runs Windows 2000/NT, Linux, Apple Mac, SUN Solaris, SCO Unixware or Novell Netware, Personal Solution-Pac software is easy to install and use.

► Upgrades

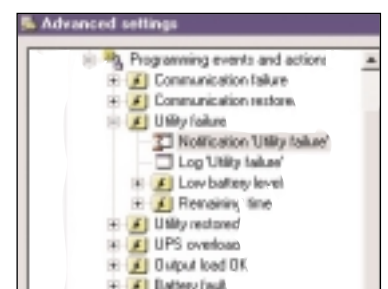
Software updates and the latest versions may be downloaded free of charge from the www.mgeups.com site.

► Dynamic management of system security

Personal Solution-Pac saves data on electrical events, alerts users and can automatically shut down the computer system if an outage lasts too long.

Using the powerful Event/Action module, it is possible to precisely adapt the management of system security, including shutdown of applications, sending of alerts via pagers or e-mail, programmed action sequences, monitoring of specific parameters, etc.

Message	Date
Utility restored	26/02/01 17:27:58
System shutdown > 14 min 00 s >	26/02/01 17:27:48
Utility failure	26/02/01 17:27:28



Event/Action module

	<i>ellipse premium 500</i>	<i>ellipse premium 650/800/1200</i>
Features		
Automatic voltage regulation	▶	▶
Wide input-voltage range	▶	▶
Thresholds adjustable via software (USB and S models)	▶	▶
Load		
Direct connection to standard outlet block for each country (USE, DIN, BS, IEC)	▶	▶
Outlet for peripherals requiring surge-protection only (laser printer, etc.)	▶	
PowerShare outlet with programmable backup time		▶
Battery		
Compact, sealed lead-acid battery	▶	▶
Battery charger (operates as soon as the UPS is plugged in)	▶	▶
Battery deep-discharge protection	4h	4h
Cold start	▶	▶
Automatic battery test	▶	▶
Replace battery indicators (LED + buzzer)	▶	▶
Replaceable battery	▶	▶
Communication		
Communications port	USB on USB models and serial on S models	
Power management software *	Supplied on Solution-Pac CD-ROM	
USB-model compatibility	Windows 2000/ME/98, Apple Mac OS 9.0.4 and higher	
Serial-model compatibility	Windows 2000/NT/ME/98/95, Linux, Netware, Solaris, SCO Unixware	
Supervision via the web	With XML-@gent	
Data-line protection	RJ45 network protection	
Installation		
Vertical or horizontal (under monitor)	▶	
19-inch rack (optional 2U/3U kit for <i>ellipse</i> and <i>ellipse premium</i>)	2U	3U
Services		
Extended three-year warranty	Optional Warranty+ contract (depending on the country)	

	<i>ellipse premium 500</i>	<i>ellipse premium 650</i>	<i>ellipse premium 800</i>	<i>ellipse premium 1200</i>
General				
Power (VA / Watt)	480/280	650/420	800/520	1200/780
Dimensions (W x H x D in mm)	78x303x309		130x320x340	
Weight (kg)	7		10	12
Technical characteristics				
Input-voltage range	160 V to 264 V (adjustable to 150 V to 264 V on both the USB and S models)			
Output voltage (on battery power)	230 V (adjustable to 220 V, 230 V and 240 V on both the USB and S models)			
Input and output frequency	50 / 60 Hz (autosensing)			
Resettable protection (circuit breaker)	▶	▶	▶	▶
Standards				
Safety	EN 50091-1-1, EN 60950(RD), IEC 60950, TÜV GS-Mark (DIN model)			
Electromagnetic compatibility	EN 50091-2, EN 50022/B, IEC 62040-2, IEC 61000-3-2, IEC 61000-3-3			
Design, manufacture, services	ISO 9001			
Environment	Made in France in an ISO 14001 certified factory			



MGE UPS SYSTEMS

140, avenue Jean Kuntzmann
ZIRST - Montbonnot Saint Martin
38334 St Ismier Cedex - France
Tel : (33) (0)4 76 18 30 00



MGE0389UKO