

# POWER

# Lines

POWERLINES NO 7 • AUTUMN 2002

## MICROSOFT OEM

→ INGRAM MICRO SERVER ACTION 2

## 3Com

→ NEW 10/100 SWITCHES 3

## SYMANTEC

→ CLIENT SECURITY 4

## FUJITSU SIEMENS

→ PRIMERGY 5

## MICROSOFT

→ SMALL BUSINESS SERVER 2000 6

## COMPUTER ASS.

→ CHOICE SUPPORT PROGRAM 8

→ BRIGHTSTOR ARCSERVE BACKUP 9

## IBM

→ xSERIES 10

## IOMEGA

→ ZIP 750 MB DRIVE 12

→ HARD DISK DRIVES 12

## VERITAS

→ BACKUP EXEC v8.6 13

## AVM

→ NEW AT INGRAM MICRO 14

## SEAGATE

→ CHEETAH 15

## OPTION INT.

→ GPRS PC CARD 16

## KINGSTON

→ NUMBER 1 IN MEMORY! 17

## LINKSYS

→ WIRELESS NETWORK 18

## EICON NETWORKS

→ SECURE INTERNET CONNECTIVITY 19

## hp

→ COMPAQ SERVERS 20

→ hp NETWORKING 22

## INGRAM MICRO

→ SNS GROUP 24

## D-LINK

→ NEW AT INGRAM MICRO 26

## NETWORK ASS.

→ ACTIVE VIRUS DEFENSE (SBE) 27

## BAUSCH DATACOM

→ ADSL ROUTERS 27

## RIGHT VISION

→ NEW AT INGRAM MICRO 28

# TABLE OF CONTENTS

## THE ENTERPRISE EDITION FROM INGRAM MICRO



AVM 14



D-Link 26



Microsoft 2

INGRAM  
MICRO®

# Ingram Micro server action

## Small Business Service rebate

*From now till the end of this year, you will be able to earn up to 350,00€ service rebate when you sell Microsoft OEM Small Business Server with some services (installation, configuration, migration, ...).*

### → CONDITIONS FOR THE SMALL BUSINESS SERVICE REBATE

- Action valid **until end December 2002**
- Reseller has to **give extra service** while selling the Microsoft Small Business Server
- The Small Business Server Rebate is equal to the service invoiced, with a max. of 350,00€ per Microsoft Small Business Server. The total maximum rebate per reseller is 5.000,00€.
- As a pre-requisite, the reseller **needs to gain/prove technical expertise**:
  - either by attending a 1-day hands-on training on Small Business Server
  - or by passing an online exam
 Either one will get him a 'reference number' With the reference number, the serial number of the Small Business Server and a copy of the customer invoice he goes to a website, fills out some details and gets the value of the service sold, deposited on his bank account
- This action is valid for **Small Business Server sold in OEM, Open license or retail box.**

The URL of the website is  
[www.microsoft.com/belux/partner](http://www.microsoft.com/belux/partner) or  
[www.microsoft.be/partner](http://www.microsoft.be/partner)

- ### SMALL BUSINESS SERVER 2000 SR3 CONTENTS
- Microsoft Windows 2000 Server with Service Pack 3
  - Microsoft Exchange 2000 Server & Microsoft Outlook 2000 Service Release1
  - Microsoft SQL Server 2000 Standard Edition
  - Microsoft ISA (Internet Security and Acceleration) Server 2000 Standard Edition
  - Microsoft Host Integration Server 2000
  - Microsoft Frontpage 2000
  - Microsoft Systems Management Server 2.0 incl. Service Pack 2
  - New services for shared fax and modem.

2

### INGRAM MICRO SKU

- 803 BB32 - Small Business Server (SBS) 2000 OEM NL 1.765,00€/unit
- 803 BB34 - Small Business Server (SBS) 2000 OEM FR 1.550,00€/unit
- 803 BB33 - Small Business Server (SBS) 2000 OEM UK 1.480,00€/unit

## Free software installation of Microsoft OEM Windows 2000 Server with the purchase of an A-brand server!

### → PACKAGING

- 1 unit per OEM distribution pack, includes 5 clients

### → LICENSING TERMS: WHEN MAY YOU BUY MICROSOFT OEM WINDOWS 2000?

- Microsoft OEM Windows 2000 Server may be distributed **with any computer hardware component**
- **If distributed with an assembled computer system** (for ex. hp server, IBM server, ...)
- **One condition: Microsoft OEM Windows 2000 Server must be preinstalled!**
- Price: **save money with Microsoft OEM**, Microsoft OEM Windows 2000 Server about 20% cheaper than Microsoft Retail Box Windows 2000 Server

### → MICROSOFT OEM WINDOWS 2000 SERVER UP TO 20% CHEAPER THAN THE RETAIL PRODUCT!

*Action is also valid on Microsoft OEM Small Business Server.  
 Action valid on every purchase between 01/11 – 31/12*



### INGRAM MICRO SKU

- 803 GM20 Windows 2000 Server SR3 OEM NL
- 803 GJ93 Windows 2000 Server SR3 OEM FR
- 803 ZL11 Windows 2000 Server SR3 OEM UK
- 803 GE79 Windows 2000 Server SR3 OEM GE

**Microsoft**  
 OEM System Builder

# Cost-Effective New Wirespeed 10/100 Switches

To complement a growing selection of powerful LAN Core switches, 3Com is adding two new devices to its portfolio of managed Ethernet and Fast Ethernet Layer 2 workgroup switches.

The new 26-port 3Com® SuperStack® 3 Switch 4226T provides 24 autosensing, 10/100 ports and two fixed 10/100/1000 ports. The new 50-port 3Com SuperStack 3 Switch 4250T provides twice as many autosensing 10/100 ports and two fixed 10/100/1000 ports.

Both devices offer many impressive Layer 2 features at breakthrough pricing, setting a new standard for value in workgroup switching.

## → A SAMPLING OF SWITCH FEATURES

- **Exceptional value.** The switches' rich features combine with their low cost of purchase and ownership to yield extremely cost-effective workgroup switching
- **Wirespeed performance.** Both switches deliver full nonblocking, wirespeed performance across all ports, with a forwarding rate of 6.5 millions packets per second for the 26-port switch and a forwarding rate of 10.1 millions packets per second for the 50-port switch
- **Plug-and-play installation.** Switch configuration is fully automatic, with no additional hardware required
- **Support for fail-safe power.** At the back of each switch is a Redundant Power System socket, allowing connection of a SuperStack 3 Advanced Redundant Power system for protection against internal power supply failure
- **Built In Stacking.** Connect to other local switches using built-in Gigabit ports. Integrated stacking management available as a software upgrade by late 2002.

ARE YOU LOOKING FOR A	YOUR BEST CHOICE IS
→ expansion of a already existing stack of SuperStack 3 Switches 3300	Yes 3Com SuperStack 3 Switch 3300 family
<b>No, are these the features you are looking for?</b>	
→ cost-effective	Yes 3Com SuperStack 3 Switch 4200 family
→ manageable switch	
→ stackable (upto 4 units) 10/100 Layer 2 wirespeed non blocking switch	
→ with 2 10/100/1000 ports (function as stacking or uplink ports)	
<b>No, are these the features you are looking for?</b>	
→ manageable switch	Yes 3Com SuperStack Switch 4400 SE
→ stackable (upto 192 ports)	
→ 10/100 wirespeed non blocking switch	
→ expandable with 8 high speed uplinks and	
→ upgradeable with the Layer 4 intelligence of it's bigger brothers	
<b>No, are these the features you are looking for?</b>	
→ manageable switch	Yes 3Com SuperStack Switch 4400 family
→ stackable (upto 192 ports)	
→ 10/100 wirespeed non blocking switch	
→ expandable with 8 high speed uplinks and	
→ advanced Layer 4 intelligence for prioritisation of important applications	

## THE FULL PORTFOLIO OF 3COM 10/100 MANAGED SWITCHING CHOICES

The two new switches expand our selection of managed Layer 2 Ethernet and Fast Ethernet switched connections. To deploy advanced traffic management features such as Quality of Service (QoS), application prioritization, and transparent webcache redirection, choose the 24-port or 48-port 3Com SuperStack 3 Switch 4400. It provides traffic controls to speed real-time and mission-critical applications.



To have basic Layer 2 functionality now with the option of a later software upgrade to advanced traffic management features, choose the affordable 24- or 48-port SuperStack 3 Switch 4400 SE.

For price-optimized basic Layer 2 switching, the two new 3Com SuperStack 3 Switch 4200 devices provide premier choices. They join the 48-port SuperStack 3 Switch 4300-which also offers dual expansion ports for 100/1000 stacking or high-speed uplinks-and the 24-port SuperStack 3 Switch 3300, with models that accommodate a variety of copper and fiber media.



INGRAM MICRO SKU		
→ 382 4824	3C16985B-ME	SuperStack 3 Switch 3300 XM, 24 10/100 ports, 1 matrix port
→ 382 4825	3C16986A-ME	SuperStack 3 Switch 3300 TM, 24 10/100 ports, 1 1000Base-T port, 1 matrix port
→ 382 4826	3C16987A-ME	SuperStack 3 Switch 3300 SM, 24 10/100 ports, 1 1000Base-SX ports, 1 matrix port
→ 382 4827	3C16988A-ME	SuperStack 3 Switch 3300 MM, 24 10/100 ports, 3 matrix ports
→ 382 5792	3C17300	SuperStack 3 Switch 4226T, 24 10/100 ports, 2 10/100/1000 ports
→ 382 5796	3C17302	SuperStack 3 Switch 4250T, 28 10/100 ports, 2 10/100/1000 ports
→ 382 5209	3C17203-ME	SuperStack 3 Switch 4400 24 ports, 24 10/100 ports
→ 382 5614	3C17204-ME	SuperStack 3 Switch 4400 48 ports, 28 10/100 ports
→ 382 5714	3C17206-ME	SuperStack 3 Switch 4400SE 24 ports, 24 10/100 ports

# Client Security for better Client Protection



## WHAT IS SYMANTEC CLIENT SECURITY?

Symantec Client Security offers large, medium, and small enterprises better client protection by combining multiple security technologies, including Symantec's firewall, intrusion detection, and industry-leading anti-virus technologies, into an integrated solution. Centralized management of all Symantec Client Security technologies, plus integrated installation, deployment, and response, simplifies security management, administration, and support – to help lower overall security costs.

## VALUE STATEMENTS

### → AV/FIREWALL ADMINISTRATOR OR IT SECURITY MANAGER

Based on Symantec's experience as the global leader in Internet security, we have the ability to provide your workstations and remote clients better protection against increasingly complex Internet threats, hacker attacks, and attempted intrusions through a single, integrated, centrally managed solution. This integration will improve the overall security of the workstations within your network, reduce the administrative burden of managing/updating multi-vendor security products, and help you respond faster to security breaches.

4

### → BETTER CLIENT PROTECTION THROUGH INTEGRATION

Combines Symantec's client anti-virus, firewall, and intrusion detection technologies into a single, comprehensive solution that provides enhanced protection at the corporate desktop from:

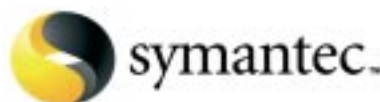
- Viruses and malicious code
- Hacker attacks
- Unauthorized intrusions and port scans

#### Benefits:

- Provides increased protection against complex Internet threats (such as Nimda & CodeRed), which can use multiple modes of entry into your network
- Safeguards your confidential corporate data from loss or theft
- Reduces system downtime and helps maintain productivity
- Reduces risk of financial loss
- Eliminates cross-vendor interoperability issues that could occur.

### → FAST RESPONSE TO SECURITY THREATS

Delivers the most current anti-virus, firewall, and intrusion detection protection in a single update, from a single security vendor.



#### Benefits:

- Enables enterprises to respond faster to security threats –particularly complex Internet threats– improving the overall security posture of their network
- Eliminates the administrative burden of updating a multi-vendor solution, lowering overall costs.

#### → EASIER MANAGEMENT

#### → CENTRALIZED MANAGEMENT CONSOLE

Allows you to remotely install, configure, manage, and update client anti-virus, firewall, and intrusion detection protection from a central management console –Symantec™ System Center.

## HOW TO LICENSE SYMANTEC CLIENT SECURITY

Symantec licenses Symantec Client Security on a per node basis. Customers may purchase Symantec Client Security through the channel via the Value and Elite programs.

### → VALUE PROGRAM HIGHLIGHTS

- Certificate-based, requiring no legal review
- Minimum purchase of 10 units to qualify
- "Mix and match" purchase with other products in the AntiVirus product family to achieve a higher price band
- Bundled with one year Gold Maintenance (includes Gold Support and Upgrade Insurance), with the option to purchase a second year.

#### Value License Options include:

- Media Pack
- License + Gold Maintenance 1 Year
- Gold Maintenance 1 or 2 Year Renewal
- Gold Maintenance 2 Year Extension
- Competitive Upgrade + Gold Maintenance 1 Year
- Crossgrade + Gold Maintenance 1 Year from:
  - SAV Corporate Edition 8.0 for Workstations
  - SAV Corporate Edition 8.0 for Workstations & Network Servers
  - SAV Enterprise Edition 8.5
  - Symantec Desktop Firewall 2.0.

Contact our License Desk for more information through: [besaleslicensing@ingrammicro.be](mailto:besaleslicensing@ingrammicro.be)

# Europe's leading IT manufacturer

## PRIMERGY C150

→ PERFORMANT PENTIUM® 4 ALL-ROUND SERVER

The PRIMERGY C150 is ready for any subsequent centralization and for modular use – where several dedicated systems are also used in a typical floor-stand environment – so investment protection is ensured.

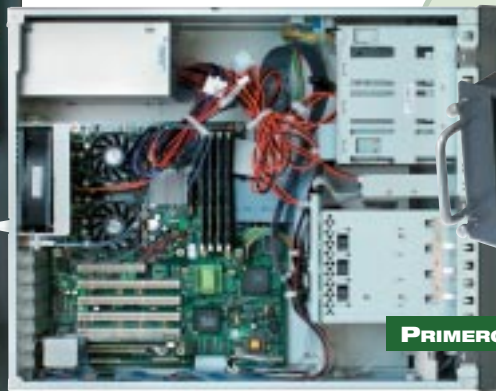


PRIMERGY C150

## PRIMERGY C200

→ THE BEST IN CLASS TWO-WAY SERVER

The PRIMERGY C200 represents an entry in the PRIMERGY All-round Dual processor Server segment. Target groups are a.o. bigger companies (which deploy department servers for various tasks), branch offices (which deploy application servers for dedicated tasks) and small and medium sized companies (as a flexible “all-round” server). This server is the ideal platform wherever a high availability is required but little technical know-how is present, and therefore ease of maintenance and reliable server operations is mandatory.



PRIMERGY C200

## PRIMERGY F200

→ AVAILABILITY

Positioned as a universal platform for the SME market, the PRIMERGY F200 offers a versatile range of uses. Thanks to its high scalability and its excellent overall performance due to the latest SCSI and motherboard technology, this server is suitable e.g. as a branch system, a departmental system, for e-commerce applications, and as a communications server.



PRIMERGY F200

### KEY FEATURES

- Intel Pentium 4 processor 1.6 GHz - 2 GHz
- 400 MHz FSB, 512 KB SLC
- up to 1.5 GB SD-RAM memory (ECC protected)
- 10/100 Mbits LAN on board
- 6 PCI slots
- 16 MB graphics controller
- up to 292 GB (4x 73 GB) hard disk capacity
- 3 accessible drives for CD/DVD, FD and tapes
- only 5 height units in rack version
- easy conversion from floorstand into rack version
- New common 1-inch Hard disk frames (can be used in other Primergy servers)
- EasyMirror (Hard disk mirroring) standard on board
- Serverstart and Serverview standard on board

### KEY FEATURES

- 1 or 2 Intel Pentium III, 1.26 GHz
- 133 MHz FSB, 512 KB SLC
- up to 4 GB SD-RAM memory (ECC, 2-way interleave, memory scrubbing)
- 10/100 Mbits LAN on board
- 6 PCI slots (4x 64 bit/66 MHz)
- up to 292 GB hard disk capacity (4x 73 GB)
- only 5 height units in rack version
- easy conversion from floorstand into rack version
- New common 1-inch Hard disk frames (can be used in other Primergy servers)
- EasyMirror (Hard disk mirroring) standard on board
- Serverstart and Serverview standard on board

Since the rack variant takes up just 5 height units – with 4 hard disks and 3 accessible drives plus FD – space in the rack can be used optimally if the server will be converted subsequently.

The PRIMERGY F200 also offers all the necessary features for use as a node in failover cluster configurations and for small and medium-sized ERP installations. Since the rack variant takes up just 4 heights – with 6 hard disks and 3 accessible drives plus an optional slim CD/DVD and FD – space in the rack can be used optimally if the server will be converted subsequently.

### KEY FEATURES

- 1 or 2 Intel Pentium III, 1.13 GHz - 1.26 GHz
- 133 MHz FSB, 512 KB SLC
- up to 4 GB SDRAM memory
- 6 bays for easy change SCSI hard disks
- 3 free bays for removable media
- On-board Intel 10/100 + network controller
- 6 PCI slots (4x 64-bit)
- internal disk capacity of 438 GB

# Small Business Server 2000 Promotion at Ingram Micro!

**Up to 350,00€ discount on SBS 2000 till December 31 2002\***

*Small Business Server 2000 is the flexible network solution designed to help small businesses, with up to 50 computers, get more done in less time.*

The integrated Small Business Server helps you take advantage of the rapidly changing Internet, to manage and grow customer relationships, and to enhance your company's productivity.

**→ INTERNET-ENABLE YOUR BUSINESS**

Provide company-wide, shared Internet access that's fast and secure, with Microsoft Internet Security and Acceleration (ISA) Server 2000. Access your network remotely from any device that's hooked up to the Internet, using a secure virtual private network (VPN). And with Web services, you can build, stage, and/or host your own Internet presence using Microsoft FrontPage® 2000 and Microsoft Internet Information Services (IIS) 5.0. This gives customers all-hours access to your business. You can also manage your employee Web access policy.

**→ MANAGE AND GROW CUSTOMER RELATIONSHIPS**

Great communications tools help you keep in touch with current customers through direct, personalized e-mail, and to reach new customers with automated e-mail or fax mailings.

With flexible customer management capabilities, you can track customers with a shared contact

database using Microsoft Outlook® 2000 and Microsoft Exchange 2000 Server public folders. You can also assign individual e-mail aliases to employees for direct, personalized customer communications. In addition, you are able to provide constant access to information about your company, through your own Web site.

**→ ENHANCE COMPANY PRODUCTIVITY**

Help users to easily share files, computer equipment, and business applications on the secure, reliable Windows 2000 platform. With Small Business Server 2000, your users are able to access important files and e-mail anytime and from anywhere.



**Connect people** with knowledge. Use Exchange 2000 and Outlook 2000 to streamline communications in sending and receiving e-mail and faxes, scheduling meetings, and holding real-time Internet meetings from your desktops.

**Run your business** more effectively with one, or many, of the thousands of available line-of-business applications – compatible with Windows 2000 Server, Microsoft SQL Server™ 2000,

and/or Exchange 2000. With Small Business Server 2000, you can also develop database solutions that are tailored to specific businesses.

Small Business Server saves your organization time and money. For example, you'll spend less time on maintenance calls, control desktops with minimal impact to individual employees, buy fewer modems, and lease fewer phone lines.

**→ SMALL BUSINESS SERVER INCLUDES**

- **Microsoft Windows 2000 Server.** Windows 2000 is the network operating system that provides file, print, Web, application, and management services
- **Microsoft Exchange 2000 Server.** Exchange Server is the messaging and collaboration server that delivers anytime, anywhere access to the people and information you want
- **Microsoft Internet Security and Acceleration (ISA) Server 2000.** This offers an extensible firewall with Web cache server and policy-based security, acceleration, and management of shared Internet connections
- **SQL Server 2000.** SQL Server is the fast, reliable relational database management server and engine for running a multitude of business software solutions
- **Microsoft FrontPage 2000.** FrontPage is the Microsoft Office Web site creation and management tool
- **Microsoft Outlook 2000.** Outlook is the Office e-mail and personal information manager.



**\*CONDITIONS**

- Proof of competence through online test or participation to Microsoft SBS training course
- Service should be included in your offer towards the enduser
- Provide a copy of the final invoice including services
- The invoiced amount for services will be credited by Microsoft with a maximum of 350,00€.

# Small Business Server 2000

## Licensing and Pricing

### LIMITS

Microsoft® Small Business Server 2000 is a collection of Microsoft .NET server products integrated into a single solution and offered at value pricing, specifically to target the unique needs of the small business marketplace. In order to offer discounted pricing only to small business customers, Small Business Server 2000 has restricted usage. These usage limits are appropriate for the majority of the small business customer market for whom Small Business Server is intended to be targeted. Usage of Small Business Server 2000 is subject to three parameters:

- 1) A maximum of 50 workstations can be connected to a Small Business Server 2000 network. This also limits the number of workstations that can access any of the component server applications.
- 2) The server is a single domain solution, meaning that the network is isolated technically from joining another larger private network. This ensures that Small Business Server is not appropriate for large enterprise branch offices, where corporate network connectivity would be a requirement.
- 3) All of the server software in Small Business Server 2000 is licensed to be installed on a single server machine. Small Business Server customers are not permitted to split components for installation on other machines.

### SERVER

All of the component server applications in Small Business Server 2000 must be installed on a single machine. The Windows 2000 Server in Small Business Server 2000 is deployed as a domain controller, at the root of the Active Directory forest and we've disabled the ability to establish trusts relationships with any other domain. There are several implications to this deployment. Other server machines can be added to a Small Business Server network, and there are no limits on the number of server machines a customer is able to add to a Small Business Server network.

These servers can do many things. Some common examples include: running an application, acting as a backup domain controller to assist in recovery and to maintain the ability to authenticate on the network in the event of a server-down situation, and/or running Terminal Services. Since Small Business Server is the top of the domain structure and it cannot trust any other domains, it is not possible to have two Small Business Servers on the same network.

### CLIENTS

The server is deployed with a hard-coded client capacity of 5. Additional clients can be added through purchasing and deploying Client Add Packs, available in increments of 5 and 20. Client Add Packs consist of a license and license media (3.5 floppy disk). The license media cannot be copied and once used cannot be used again. Client capacity can be incremented to a maximum of 50. Client use is defined as any "connected workstation", which means that any PC or device ever connecting to the Small Business Server network requires a client license. The number of user accounts, however, is unlimited by licensing. It is quite common in many small businesses for users to share a computer. The Small Business Server client license requirement is focused on the number of client hardware machines, not the number of users. There is a single exception case in the license where a client license is not required for every machine – which is when it comes to a user who may have a primary PC with a license, yet needs to connect from other secondary devices, such as a home PC or an Internet Kiosk. In order to avoid excessive double licensing in such cases, the Small Business Server 2000 license agreement grants an exception for the use of such a secondary device, provided it is used less than 20% of the time by the user.

### OPEN LICENSE

Microsoft® Open License is designed to provide simple and flexible volume-based pricing for virtually any size business – starting with as few as five licenses. A single Small Business Server 2000 server purchase, because it includes 5 Client Access Licenses (CALs), qualifies customers for participation in the Open License program. Note that when ordering Client Add Packs through the Open License Program, it is necessary to separately order the corresponding media from Ingram Micro in order to receive the software necessary to deploy the client technology.



For more information on Microsoft Open License, visit <http://www.microsoft.com/business/licensing/openlicense/default.asp>

#### INGRAM MICRO SKU

→ 803 AAU7	Small Business Server 2000 CD/DVD 5 CLT	UK
→ 803 AAV3	Small Business Server 2000 VUP CD/DVD 5 CLT	UK
→ 803 AAV7	Small Business Server 2000 CD/DVD 5 CLT	FR
→ 803 AAW4	Small Business Server 2000 VUP CD/DVD 5 CLT	FR
→ 803 AAU4	Small Business Server 2000 CD/DVD 5 CLT	NL
→ 803 BD77	Small Business Server VUP CD/DVD 5 CLT	NL





Computer Associates

Choice Support

## COMPUTER ASSOCIATES

# Channel Partners' Choice Support Program

Provides No Charge Support to Channel Partners, New Revenue Opportunities and Improved Client Satisfaction.

As an exclusive benefit of the CA Channel Partner Program, eligible members receive the following FREE technical support packages:

- **Affiliate Partners** - obtain one FREE 5-Incident Choice Support Package. Enabling members to receive up to 5 free support calls when needed. This offer is available per site.
- **Premier Partners** - are entitled to FREE 2 Year membership of the Value Support package per solution area. This offer enables you to specify an unlimited amount of contacts within your organisation that may request support. Partners can register for all solution areas if applicable to their business.
- **Enterprise Partners** - Receive FREE 2 Year Enterprise Technical Support for the products you are certified to sell. This offer is available per company only.

Choice Support not only gives you world-class technical assistance but the opportunity to earn additional revenue by selling support offerings to your CA customers. If you're not a Channel Partner Program member, you are missing out on all this plus a multitude of other benefits. Sign up today!

- **eSupport** - Free web-based support including direct email support from CA's Choice Tech Support team
- **Single Incident Support** - Obtain telephone technical support on a per problem basis
- **After Hours Single Incident Support** - Receive emergency telephone technical support after normal business hours
- **Incident Packs** - Discounted based on the number of support issues needed, available in blocks of 5
- **Value Support** - Unlimited telephone support, Monday-Friday (office hours)
- **Preferred Site Support** - Unlimited telephone support, 24x 7.

**INGRAM**  
**MICRO**®

### INCIDENT PACKS

Incident Packs offer the ability to purchase a pre-determined amount of Direct Incidents. Telephone technical support is available Monday to Friday in English (8:00 am to 6:00 pm. GMT), French (9:00 am to 5:00 pm GMT+1), German (9:00 am to 5:00 pm GMT+1). Incident Packs require a minimum purchase of five.

CA partners and customers will benefit from the ability to purchase multiple incidents packs at a discount. Incident Packs are currently available for ARCserve and InoculateIT™. All partners and customers who purchase an incident pack or packs are automatically enrolled in CA's proprietary Open License Program™ (OLP). Please contact Ingram Micro for details regarding Incident Packs.

### VALUE SUPPORT

CA's Value Support provides unlimited telephone technical support. It is available Monday to Friday in English (8:00 am to 6:00 pm. GMT), French (9:00 am to 5:00 pm GMT+1), German (9:00 am to 5:00 pm GMT+1). Our Value Support Program enables our partners and customers to specify an unlimited amount of contacts per company for support.

By choosing a one or two year membership, our partners and customers receive telephone technical support from our Technology Consultants. Value Support is available for ARCserve and InoculateIT™. Each Value Support membership is based on a pricing per solution set (Storage, Desktop, and Security). All partners and customers who purchase Value Support are automatically enrolled in CA's proprietary Open License Program™ (OLP). For more information concerning Value Support, please contact Ingram Micro.

For more information visit  
<http://ca.com/channel/emea/sell/choice/>



# BrightStor Arcserve Backup for Small Business Server



## COMPLETE DATA PROTECTION FOR MICROSOFT SMALL BUSINESS SERVER 2000

BrightStor ARCserve Backup for Small Business Server is a cost-effective, automated backup, restore and antivirus solution for Microsoft's Small Business Server 2000. By combining several award-winning products into one tightly integrated solution it provides comprehensive data protection for today's small businesses.

### → DISTINCTIVE FEATURES

- **Client and Server Backup.** BrightStor ARCserve Backup for Small Business Server backs up the Microsoft Small Business Server 2000 and any attached desktop clients. Patented Open File Technology provides online protection for Microsoft's SQL Server and Exchange Server.
- **Easy Installation.** The Microsoft Small Business Server "Setup Computer Wizard" installs remote client agents without the need to create floppies for installation.
- **Seamless Integration.** BrightStor ARCserve Backup for Small Business Server seamlessly integrates with the Microsoft Management Console for quick and simple operation.
- **Easy-to-Use Wizards.** Wizards can be launched through the Microsoft Small Business Server Console to guide staff through all backup and recovery operations.

- **Automated Operation.** Advanced scheduling and automation features enable secure, unattended operation.
- **Integrated Virus Scanning and Cure.** CA's industry-leading eTrust InoculateIT antivirus software is integrated with the solution to automatically scan and cure viruses during backup and copy operations, as well as update virus signatures.
- **Integrated Tape and Optical Library Support.** Autoloader support extends backup capacity to single or automated libraries with one drive and unlimited slots.
- **Extensive Device Support.** BrightStor ARCserve Backup for Small Business Server supports a wide array of storage devices.
- **Advanced Media Management.** Advanced media management tools provide automated tape export capability, date-based copy and additional command line options.
- **Advanced Scheduling.** A calendar-based scheduler enables storage strategy customization - staff can run backup jobs immediately or schedule jobs to run at any time while rotation schemes can be created to meet an organization's unique needs.
- **Assured Data Integrity.** The solution supports multiple verification methods, including CRC, fast tape scan and byte-by-byte verification to ensure data integrity.
- **Intelligent Alert Notification.** Multiple customizable problem notification options are available, including pager, email, SNMP traps, event logs and network broadcasts.

### → FEATURES AT A GLANCE

- Easy installation and configuration
- Seamless integration with Small Business Server Administration Console
- Realtime antivirus protection
- Robust backup of Microsoft Exchange 2000 and Microsoft SQL.

### INGRAM MICRO SKU

- 106 2926 - BrightStor ARCserve Backup for Small Business Server
- 106 2927 - BrightStor ARCserve Backup for Small Business Server + Agent for open files



Computer Associates

BrightStor

# TopSellers xSeries

*Small Business Server 2000 is the flexible network solution designed to help small businesses, with up to 50 computers, get more done in less time.*

Customer demand for lightning-fast communication and transactions has driven the need for universal commitment to e-business. Most companies now conduct some facet of business over the Web. Success hinges on high-performance hardware that embraces open standards – exactly what you will find in the IBM hardware portfolio and its commitment to e-business excellence:

- **Application flexibility** - choices in selecting, building and deploying applications
- **New tools for managing e-business** - new ways to manage end-to-end growth, risks and costs
- **Innovative technology** - extreme performance and scalability with IBM reliability and security.

Through a combination of mainframe-inspired technologies and intelligent management tools, xSeries servers give a real hands-off reliability. This sophisticated functionality is available in a wide range of the current TopSeller models.



IBM X-SERIES 220

## X205

The IBM eServer xSeries 205 delivers new levels of performance, value and availability for small to medium businesses. This extremely affordable, uni-processor server features an Intel Pentium 4 processor with 533 MHz front-side bus speed, impressive internal storage and support for remote systems management capabilities. Ideal for businesses with multiple offices or locations. The x205 is a tower server that can be converted easily to a rack via an option. It features a storage choice of IDE drives, or for the first time, SCSI hot-swap hard disk drives (HDDs) for increased availability.

### FEATURES AND BENEFITS

- **Smart systems management**, providing alerting and manageability features such as Automatic Server Restart and Alert Standard Format. Supports the IBM Remote Supervisor Adapter, providing proactive monitoring and management of IT assets

## X220

The IBM xSeries 220 is packed with power to support file-and-print serving, workgroup productivity applications and e-commerce. This server can scale up to two processors and 4 GB of memory.

Hot Swap technology on some models allows to replace hard drives without powering down the system, while the optional Remote Supervisor Adapter allows remote system management.

### FEATURES AND BENEFITS

- Dual processing power at an entry price
- Tool-free access for extreme ease-of-use
- Optional high-performance RAID controllers increase levels of availability and redundancy
- Fits into an office or rack environment at only 51 cm (20") deep and 4U high

## X235

The IBM eServer xSeries 235 is a 2-way server using Intel's Xeon processors offering power and performance at an affordable price. Offering a pathway for future growth, the x235 provides large expandability with up to 6 GB of DDR memory, internal storage capability up to 660 GB and six available PCI slots.

### FEATURES AND BENEFITS

- **Affordable performance**
- **Around-the-clock availability**  
X-Architecture features like Chipkill memory, hot-swap/redundant components and Active PCI-X adapter slots make it easy to keep the server up and running around the clock. And the x235 is the first xSeries server with built-in RAID-1 support, helping to ensure that the system will be available whenever needed
- **Rock-solid reliability**  
The x235 includes a full array of systems management features – Light Path Diagnostics, Predictive Failure Analysis, IBM Director and the Integrated Systems Management Processor – that work together to provide proactive and predictive capabilities for increased system reliability

## X255

The IBM eServer xSeries 255 4-way server offers impressive memory, internal storage and I/O capacity making it an ideal multi-purpose server for business-critical enterprise applications. The x255 is packed with the Intel Xeon Processor MP and standard gigabit Ethernet to provide speedy access to information, helping to virtually eliminate bottlenecks.

# xSeries

Loaded with X-Architecture high-availability features like hot-swap PCI-X adapter capability and Hot Spare Memory technology and priced for world wide deployment, the x255 provides long-life IT investment protection.

#### FEATURES AND BENEFITS

- Optimised for internal expansion and scalability, the x255 serves your business needs - from file-and-print and e-mail serving to data warehousing and transaction processing
- Loaded with standard X-Architecture high-availability features - like Active PCI-X for hot swapping adapters and redundant power/fans - designed to keep the server running around the clock

The highly manageable IBM eServer xSeries 335 2-way server delivers excellent performance in space-constrained environments. Its 1U form factor allows installation of up to 42 systems in an industry-standard rack. The integrated RAID-1 functionality allows to mirror HDDs for data protection and increased availability. Dual Gigabit Ethernet and two PCI-X slots help deliver outstanding computing performance in a space-constrained, rack-dense environment.



Contact our IBM specialist  
for more info at: 02/254.93.74.



IBM x-SERIES 235

#### FEATURES AND BENEFITS

- Designed with service providers and constrained enterprise data center environments in mind, the system ships with IBM Director and Advanced Systems Management Processor as standard to make systems management simple, yet comprehensive. Remotely manage installations more easily thanks to support for Rapid Deployment Manager software
- Designed for ease of installation and use, C2T Interconnect cable chaining technology reduces rack clutter and provides significant financial savings per rack. IBM ServerGuide included to help simplify system setup and loading of operating systems

#### INGRAM MICRO SKU

- 058 XM02 P023XBE eServer x205, P4-2.0 GHz, 40 GB, 256 MB, IDE, 512 KB Cache
- 058 XM03 P032XBE eServer x205, P4-2.4 GHz, 36 GB, 256 MB, SCSI, 512 KB Cache
- 058 HE15 K642XBE eServer x220, P3-1.26 GHz, 128 MB, 512 KB Cache, 18.2 GB U160, 40x CD, Eth
- 058 TH77 K652XBE xSerie 220, P3-1.4 GHz/133 MHz, 512 KB Cache, 128 MB, 18.2 GB, Tower
- 058 WU93 K12BXBE eServer x235, Xeon 2.0 GHz, 512 MB, 512 KB Cache, U320 40x CD, Eth
- 058 WU58 K13BXBE x235 TopSeller, Intel Xeon, 2.2 GHz/400 MHz, 512 KB Cache, 512 MB, 109.2 GB, S/RAID5i, 2x 560 W p/s, Tower
- 058 WZ71 K51BXBE x255 TopSeller, 2x Xeon MP, 1.4 GHz/400 MHz, 512 KB Cache, 512 MB, 1 GB, 109.2 GB, S/RAID4Lx, 4x P/Supplies, Tower
- 058 WZ91 K52BXBE x255 TopSeller, 2x Xeon MP, 1.5 GHz/400 MHz, 512 KB Cache, 512 MB, 2 GB, 145.6 GB, S/RAID4Mx, 4x P/Supplies, Tower
- Tbc P642XBE xSerie 335, Intel Xeon, 2.0 GHz/400 MHz, 512 KB Cache, 512 MB, 40 GB EIDE, Rack
- 055 WZ57 K012XEU eServer x345, 2x Xeon 2.0 GHz, 3x 36 GB, 512 MB, 512 KB RAID
- 058 XJ60 K032XEU eServer x345, 2x Xeon 2.4 GHz, 3x 36 GB, 512 MB, 512 KB RAID

# ZIP 750 MB Drive

More capacity and more speed to protect your important data

- **Speed** - Blazing fast 50x50x50x write/re-write/read speed
- **Capacity** - Impressive 750 MB capacity for abundant file protection and storage
- **Protection** - Backup and file transfers are a snap with Iomega QuikSolutions™ Software Suite
- **Compatibility** - Reads and writes Zip 750 MB and Zip 250 MB disks, reads all Zip 100 MB disks.

Different connectivity choices are offered such as USB 2.0, FireWire® and an Atapi Internal drive. The drive is easy to use, reliable and has a brand new cool design. The Zip 750 MB disk is for both PC & Mac. Included are new software titles such as Iomega Automatic Backup, which allows users in one go to easily set up their backup system, and Iomega Sync™, which allows users to easily transfer files between computers.



I O M E G A ZIP 750 MB

## WHAT'S NEW WITH THE ZIP® 750 MB DRIVE AND DISKS?

The Zip® 750 MB drive offers more capacity and more speed than the Zip 100 MB and 250 MB drives. The Zip 750 MB drive reads, writes and re-writes data at speeds of 50x50x50x.

## WHAT ARE THE KEY FEATURES AND BENEFITS?

- Fast speed reading, writing and re-writing data
- Durable, scratch-resistant and password protected disk for ultimate data safety
- Incl. Iomega Automatic Backup and Iomega Sync Software
- Drive and disks work for PC & Mac.

### INGRAM MICRO SKU

- 618 Z161 Iomega Zip 750 MB USB 2.0 externe drive
- 618 Z160 Iomega Zip 750 MB FireWire externe drive
- 618 Z159 Iomega Zip 750 MB Atapi interne drive
- 618 Z165 Iomega Zip Diskette 750 MB PC & Mac 3 pack
- 618 Z163 Iomega Zip Diskette 750 MB PC & Mac 10 pack

# Iomega Hard Disk Drives

Be secure, be flexible, add life to your computer

## WHAT IS THE IOMEGA EXTERNAL HARD DRIVE SYSTEM?

The Iomega HDD external hard drive provides the high-capacity storage that's absolutely critical to the new generation of computer users. With very fast transfer rates, ergonomic, slim and ultra-sleek design, the Iomega HDD external hard drive delivers high capacity, flexibility and performance for today's data-intensive applications and digital video/audio files.

## WHAT ARE THE DIFFERENT CAPACITIES?

- Iomega HDD 20 GB and 40 GB USB or FireWire portable hard drives for security, flexibility & mobility. Ideal for road-warriors
- Iomega HDD 80 GB and 120 GB USB or FireWire external hard drives for security, capacity and flexibility. Add life to your computer or free up your server.

## WHAT ARE THE KEY FEATURES AND BENEFITS?

- Security, capacity and flexibility - add life to your computer
- Performance, speed and compatibility to back up your entire Mac or PC - Save & Smile!
- FireWire or USB 2.0 connectivity
- Save, move and share giant-sized files wherever you go
- Plug & Play: don't waste time to transfer large files between 2 or more computers
- Exclusive ergonomic and secure design: sealed disks keep your data protected from dust and other contamination
- QuikSync automatic backup and Disaster Recovery Software included.

I O M E G A HDD 80 GB



### INGRAM MICRO SKU

- 618 Z138 Iomega 20 GB HDD USB 2.0 external 2.5 inch portable drive
- 618 Z142 Iomega 40 GB HDD USB 2.0 external 2.5 inch portable drive
- 618 Z143 Iomega 40 GB HDD FireWire external 2.5 inch portable drive
- 618 Z144 Iomega 80 GB HDD USB 2.0 external 3.5 inch portable drive
- 618 Z145 Iomega 120 GB HDD USB 2.0 external 3.5 inch portable drive
- 618 Z146 Iomega 120 GB HDD FireWire external 3.5 inch portable drive



# Backup Exec v8.6 for Windows NT & Windows 2000

**Special promotional prices at Ingram Micro till 31-12-2002 !**



Version 8.6 of Backup Exec for Windows NT/2000 is the industry standard backup solution providing Microsoft certified compatibility for the entire Windows NT and Windows 2000 environment offering reliable backup and recovery of Windows 2000 Active Directory, Distributed File System and the System State components. Combined with the many available options, Backup Exec provides a complete scalable solution for any size network and any level user.

Built in wizards, agent accelerator technology and advanced device and media management offers the ease of use, high performance and flexibility to manage data quickly and reliably.

When a disaster strikes, you shouldn't have to depend on staff scrambling through multiple applications to recover data or upon those key individuals trained on multiple backup solutions. Our backup and recovery solution provides a turnkey approach for every platform and application you use, and reduce the total cost for disaster recovery preparedness to one software application. There's no need for extensive training or the maintenance of a specially trained staff.



## INGRAM MICRO SKU

- J72 1422 Backup Exec V8.6 SERVER Edition NT/2000
- J72 1340 Backup Exec V8.6 ADVANCED SERVER Edition NT/2000
- J72 1377 Backup Exec V8.6 Exchange Agent
- J72 1417 Backup Exec V8.6 MS SQL Agent NT/2000
- J72 1392 Backup Exec V8.6 Open File Option NT/2000
- J72 1376 Backup Exec V8.6 IDR Additional Remote License
- J72 Z975 Backup Exec V8.6 SAN Shared Storage Option
- J72 1394 Backup Exec V8.6 SharePoint Portal Server
- J72 1388 Backup Exec Remote Agent 8.6 NT 3PK WNT/2000
- J72 1389 Backup Exec Remote Agent 8.6 NT 1PK WNT/2000
- J72 1333 Backup Exec V8.6 Server Back Office Bundle NT/2000 SBE  
Includes Backup Exec SERVER edition plus Exchange and SQL options (Also 2 Remote Agents for NT)
- J72 1328 Backup Exec V8.6 Adv. Svr Back Office Bundle NT/2000 SBE  
Includes Backup Exec SERVER ADVANCED edition plus Exchange and SQL options (Also 2 Remote Agents for NT)
- J72 1396 Backup Exec V8.6 SBS Edition NT/2000 SBE  
Includes Backup Exec PLUS Exchange, SQL agents and Intelligent Disaster Recovery option and is only compatible with Microsoft Small Business Server

# New at Ingram Micro



## BLUEFRITZ! STARTER PACK



### → WIRELESS ISDN AND INTERNET FOR PCs AND NOTEBOOKS

The BlueFRITZ! Starter Pack is the complete wireless solution to connect your PC to ISDN and the Internet. BlueFRITZ! uses the reliable, secure Bluetooth™ wireless technology. BlueFRITZ! USB, weighing just 12 grams, is the handy, compact Bluetooth controller for your PC or notebook. Thanks to USB plug and play, it is ready to use in the blink of an eye, and sets up the connection to ISDN via the access point BlueFRITZ! AP-X.

At home or in the office, BlueFRITZ! AP-X provides not only wireless ISDN access for PCs and notebooks equipped with BlueFRITZ! USB, but also a practical ISDN PBX system. This makes it simple and convenient to connect analog telephones, answering machines or fax machines to the ISDN line. Furthermore, another PC can connect to ISDN through BlueFRITZ! AP-X's USB interface.

## FRITZ!CARD DSL

### → ADSL OVER ISDN FOR THE PC

FRITZ!Card DSL is the only ADSL terminal device to connect the PC directly to the ADSL/ISDN line, and to provide full ISDN-Controller capabilities as well as ADSL.



The internal adapter card reduces space and current requirements, as well as simplifying cabling and installation.

FRITZ!Card DSL connects the PC to high-speed ADSL Internet access and at the same time provides all ISDN services, including telefax, text messages and file transfer. Surf the Web over ADSL, fetch e-mail, send or receive fax documents with FRITZ!fax and transfer files to another computer with FRITZ!data all at once! It's perfectly simple and reliable with AVM FRITZ!Card DSL.



## FRITZ!CARD PCI v 2.0

### → THE NUMBER 1 ISDN CONTROLLER

FRITZ!Card PCI v2.0 takes advantage of the capabilities of modern PCI bus systems, including interrupt sharing, high throughput and plug & play. This ISDN controller for the 32-bit PCI slot is supplied with a CAPI 2.0 driver and features quick, simple installation. With its 3.3V technology it is especially designed for integration in modern PC systems.

FRITZ!Card PCI v2.0 exploits the full power-saving options of the Advanced Configuration Power Interface (ACPI) of Windows Me and 2000. In a system with ACPI capability, FRITZ!Card PCI v2.0 provides an additional remote wake-up function in stand-by mode.



All products also include the complete communications software FRITZ!, with modules for Internet access, file transfer, fax, telephony and an answering machine.



**INGRAM MICRO SKU**

- 765 Z168 BlueFRITZ! Starter Pack
- 765 0236 FRITZ!Card PCI V 2.0
- 765 0240 FRITZ!Card ADSL over ISDN

# Cheetah running at high speed!

*Capacity demands continue to increase while at the same time the customers are focused on lowering total cost of ownership through reduction of hardware components, server room space and overall storage management complexity.*

## CHEETAH 10K.6

→ **HIGH CAPACITY 10K RPM DRIVE LOWERS TOTAL COST OF OWNERSHIP FOR MANAGING STORAGE**

With up to 147 GB of storage and availability in leading Ultra320 SCSI and 2 GB Fibre Channel Interfaces, the Cheetah 10K.6 is ideal for maximizing the amount of capacity in any environment using the smallest footprint possible. The Seagate's Cheetah 10K.6 delivers impressive specifications that average 25% faster data rates than previous generation 10K drives. With a range of capacity options from 36 to 147 GB. The ideal choice for a range of enterprise and other data-intensive environments. To further reduce the cost of system deployment, Seagate offers the Design Service Center, helping system integrators and storage solution providers get to market faster with lower-cost, more reliable systems.



## CHEETAH 15K.3

→ **THE CROWNED DISC DRIVE KING**

The Cheetah 15K.3 is part of Seagate's lowest total-cost-of-ownership (TCO) Cheetah disc drive family, the lowest cost-per-I/Os, with its low heat and acoustic characteristics. The 15K.3 scales new heights in single-user performance and sets a new standard server-class speed. The need for increased I/O performance along with worry-free reliability in today's enterprise servers has made Seagate's 15K RPM Cheetah disc drives the most successful and widely adopted family of the 15K RPM drives ever produced.



### BEST APPLICATIONS

- Broad range of mainstream enterprise applications
- Workstations, mid-range and enterprise servers
- NAS and SAN environments

### FEATURES

- 35% more I/Os per second than 10K drives
- 25% faster minimum sustained transfer rate than 10K
- Highest reliability rating in the industry; backed by 2 previous generations of proven field reliability
- Economies of speed: fewer drives are needed to deliver the same level of IOPS as 10K-RPM drives, leading to greater overall system reliability and savings on hardware, space, power, cooling and IT administration costs, making this the lowest cost-per-I/O hard drive

### BEST APPLICATIONS

- Data Warehousing
- Imaging Multimedia video
- RAID
- Entry level to enterprise server
- Network Attached Storage (NAS)
- Storage Area Network (SAN)

### FEATURES

- Cheetah® 10K.6 enables low ownership cost
- Highest reliability and most mature 10K product design
- One product qualification for multiple interfaces & capacities
- The fastest Cheetah 10K ever – 25% improved data transfer rates
- Several millennia of consistent engineering and manufacturing experience
- Double the amount of storage per cubic foot means fewer systems deployed, less space utilized and lower operating costs

### INGRAM MICRO SKU

- 275 Y086 Seagate Cheetah 10K.6 - 36.7 GB ULTRA320 SCSI - 10.000 RPM - 68 PIN
- 275 Y083 Seagate Cheetah 10K.6 - 73.4 GB ULTRA320 SCSI - 10.000 RPM - 68 PIN
- 275 Y080 Seagate Cheetah 10K.6 - 146.8 GB ULTRA320 SCSI - 10.000 RPM - 68 PIN



### INGRAM MICRO SKU

- Tbc Seagate Cheetah 15K.3 18 GB ULTRA320 SCSI 15.000 RPM - 68 PIN
- Tbc Seagate Cheetah 15K.3 37.36 GB ULTRA320 SCSI 15.000 RPM - 68 PIN



# GPRS Mobility

## GLOBETROTTER = DATA + VOICE + SMS + PHONEBOOK

GlobeTrotter is the portable wireless extension of everything you need to run your business. It incorporates the best features of modem and mobile phone (GSM and GPRS) technology to provide the user with the most complete and sophisticated mobile data communications solution available today.

With GlobeTrotter you can phone, e-mail, browse and communicate with anyone wherever you are. GlobeTrotter works on the following operating systems Win95, Win98, Win NT, Win 2000 or Win XP and is compatible with most software applications available today.

→ **YOUR PORTABLE PC BECOMES A TRULY MOBILE OFFICE!**

## GLOBETROTTER = POWERFUL SOFTWARE SUITE

The Wireless Communication Manager (WCM) is the application software delivered with the GlobeTrotter card. After easy installation, it allows you to manage your wireless communication needs from one main window concentrating most of the functionalities available such as:

### → PHONEBOOK MANAGEMENT

- Synchronisation of contact details between the card and the application
- Modification, deletion and reorganisation of phonebook and SIM card entries
- Profiles allowing you to manage several phonebooks on one or several cards
- Fleet management: synchronisation and copy between several cards
- Phonebook backup on disk
- Transfer of data with Microsoft Outlook and Microsoft Outlook Express
- Import and export of V-cards
- Drag and drop from MS Outlook.

### → CALL MANAGEMENT

- Voice calls
- Call hold
- SMS management.

## → GlobeTrotter gives you ANYWHERE AND ANYTIME ACCESS

- GlobeTrotter is a class 10 device. This means that it can combine up to 5 timeslots at any one time in order to provide you with connection speeds of up to 60 Kbps, speeds never seen before on wireless network
- Thanks to its tri-band technology, the card can be used in most countries of the world where GSM coverage is available
- GlobeTrotter is a standard type II PCMCIA card designed with a unique integral antenna. The kit includes not only the card but also all the software you require to get started quickly. Optional accessories are also available like an audio headset or external antenna that can be used in areas with poor or limited coverage
- GlobeTrotter is the total data communication solution for the portable PC, the PDA, the tablet, or any other device including type II PCMCIA slots
- Tri-band PC Radio Card suitable for use on GSM networks worldwide
- Provides GSM Voice capability as well as GSM and GPRS Data connectivity to mobile users
- Support Ipsec client software for end to end secure corporate data exchange and synchronisation over VPN
- Wireless communication manager – WCM, provides SMS and phone utilities to your mobile device
- 16 MB Flash memory for easy upgrade.

GLOBETROTTER



INGRAM MICRO SKU

→ 367 0574 GlobeTrotter  
GPRS PC CARD

Boost your  
Wireless Internet  
Experience...

High Speed GPRS  
Wireless  
Internet Card



# Number 1 in memory!

## 10 good reasons for selling Kingston server memory

### 1. KINGSTON TECHNOLOGY IS THE NUMBER ONE INDEPENDENT MEMORY MANUFACTURER IN THE WORLD

Kingston Technology designs and builds more Intel and RISC based server and workstation memory than anyone else in the world. Kingston Technology is truly an expert in memory. Memory is Kingston Technology core business, with sales of over \$1 billion world wide.

### 2. KINGSTON MEMORY DOESN'T VOID YOUR SYSTEM WARRANTY

Some OEMs (Original Equipment Manufacturer) may try to tell you otherwise. Please ask for facts and proof in writing. Kingston Technology can provide you in writing that our memory doesn't affect the system's warranty. An OEM cannot force (tie-in) a customer to buy their own branded products by threatening to void their system warranty if they use Kingston memory. You and your customer can choose a solution that suits your needs and budgets, not the OEM's.

### 3. KINGSTON MEMORY CAN BE ADDED TO A SERVICE CONTRACT

The end user is the customer. If an end user wants support of Kingston memory just ask for Kingston memory to be included in the contract. A service provider and a partner looks after the customer's best interest. So if a customer wants support of Kingston server memory just ask the service provider to include Kingston memory in the contract.



### 4. FREE PLATINUM SERVICE FOR END USERS, FREE KINGSTONCARE FOR RESELLERS/SERVICE PROVIDERS

Kingston Technology offers extended services on Kingston server and workstation memory. You can use it yourself or pass them on to your customers. These programmes provide you and your customer peace of mind. Includes elements such as full service reimbursement and buffer stock if needed.

### 5. MAKE MORE MARGIN AND PASS ON THE SAVINGS TO YOUR CUSTOMERS

Because Kingston Technology manufactures the memory, and the OEMs don't, Kingston can offer better pricing and services. So you can make more margin. And you will look great when your customer can save hundreds on their solutions when using Kingston memory. Just compare Kingston's memory prices to the OEM's, you won't believe your eyes, and neither will your customers.

### 6. FREE EVALUATIONS

Some customers may want to evaluate Kingston memory before they decide to buy it. No problem, just give them a 30 days trial period free of charge. Kingston Technology is confident they will keep it forever once they see for themselves why it is better to buy memory from a memory manufacturer.

### 7. SPECIAL PRICING (SPN)

If you are working on a deal, or want to win an account, just ask Kingston Technology for a special pricing notification.

### 8. TOOLS

Kingston Technology is the memory expert. We have tools to help you sell our products. Just ask your Kingston Technology representative. And make sure you and your customers use our Memory Configurator. You will be a memory expert too.

### 9. LIFETIME WARRANTY

Kingston memory comes with a lifetime warranty. Ever wondered why the OEM's offer a 3 to 5 year warranty? Well, they outsource their memory products from real manufacturers like us, so they only offer a limited warranty because it is not their own product.

### 10. EXTRA SERVICES 24x 7

Kingston Technology offers a 24x 7 Support line for server memory. In case you have any urgent needs.



For more information: Call your Kingston Technology representative for further literature and sales support.  
Or call Kingston Technology Customer Services Department for further information at 00800 88 88 01 01  
Or e-mail us at [EU\\_highend@kingston-technology.com](mailto:EU_highend@kingston-technology.com)

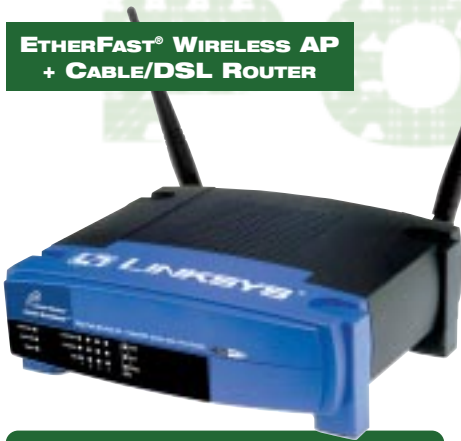
# Connect and expand your wireless network

## ETHERFAST® WIRELESS ACCESS POINT + CABLE/DSL ROUTER WITH 4-PORT SWITCH

→ CONNECT YOUR WIRELESS NETWORK TO YOUR HIGH-SPEED BROADBAND PIPELINE

The EtherFast® Wireless AP + Cable/DSL Router provides the ideal solution for connecting your wireless network to a high-speed broadband Internet connection and a 10/100 Fast Ethernet backbone. Configurable as a DHCP server for your existing network, the EtherFast® Wireless AP + Cable/DSL Router acts as the only externally recognized Internet gateway on your local area network (LAN) and serve as an Internet NAT firewall against unwanted outside intruders. The Router can also be configured to filter internal users' access to the Internet. With the dual-function speed and power of the EtherFast® Wireless AP + Cable/DSL Router, your network will take off at speeds faster than you ever imagined possible.

**ETHERFAST® WIRELESS AP + CABLE/DSL ROUTER**



**INGRAM MICRO SKU**  
→ K34 0107 EtherFast® Wireless AP + Cable/DSL Router with 4-Port Switch

### KEY FEATURES

→ MODEL: BEFW11SA

- Long operating range supports 91 m (indoors) and 457 m (outdoors)
- Capable of up to 128-bit WEP encryption
- MAC address filtering
- Supports IPSec Pass-Through and PPTP
- Internal 4-Port switch dramatically speeds up your gaming and multimedia connections
  - 2-year limited warranty

## INSTANT WIRELESS™ ETHERNET BRIDGE

→ ADD ANY ETHERNET-READY DEVICE AND EXPAND YOUR WIRELESS NETWORK FOR THE ULTIMATE IN CONNECTIVITY

Tailor-made for the home or small office network, the Instant Wireless Ethernet Bridge extends wireless connectivity to any Ethernet-ready network device, such as a printer, scanner, desktop or game console, notebook PC. The Wireless Ethernet Bridge simply and efficiently transmits data between 10Base-T and your wireless LAN. The Wireless Ethernet Bridge gives you the freedom to place any standard network resource virtually anywhere in your office. A high-powered, built-in antenna means that you're covered at distances of up to 300 meters or more.

**INGRAM MICRO SKU**  
→ K34 0134 Instant Wireless Ethernet Bridge

**INSTANT WIRELESS ETHERNET BRIDGE**



### KEY FEATURES

→ MODEL: WET11

- Interoperable with IEEE 802.11b (DSSS) 2.4 GHz-compliant equipment
- No additional drivers are needed
- Up to 11 Mbps high-speed transfer rate
- Dynamically shifts between 11, 5.5, 2, and 1 Mbps for maximum adaptability
- Low interference and high susceptibility guarantee reliable performance
- Capable of up to 128-bit WEP encryption
- Easy and quick setup
- Free technical support
- 2-year limited warranty

## VPN ENDPOINT CABLE/DSL FIREWALL ROUTER WITH 4-PORT SWITCH

→ CONNECT YOUR NETWORK TO THE INTERNET AND ACCESS A REMOTE NETWORK – WITH SECURITY AND PEACE OF MIND

The Linksys Instant Broadband EtherFast® Cable/DSL Firewall Router with 4-Port Switch/VPN Endpoint is the perfect solution for connecting a small group of PCs to a high-speed broadband Internet connection or a 10/100 Ethernet backbone. The Router can be configured to limit internal users' Internet access based on URLs and/or time periods – URL filtering and time filtering. For enhanced protection against intruders from the Internet, the Router features an advanced Stateful Packet Inspection firewall.

**INGRAM MICRO SKU**  
→ K34 0138 VPN Endpoint Cable/DSL Firewall Router with 4-Port Switch

**VPN ENDPOINT CABLE/DSL FIREWALL ROUTER**



### KEY FEATURES

→ MODEL: BEFSX41

- Protects PCs from Ping of Death, SYN Flood, Land Attacks, IP Spoofing, and other DoS (Denial of Service) attacks
- Supports up to two IPSec Virtual private network (VPN) tunnels
- Supports URL filtering and time filtering
- Blocks Java, ActiveX, and cookies
- Easily configurable through a web browser from any networked PC
- Supports IPSec and PPTP Pass-Through
- Administer and upgrade your router remotely over the Internet
- Supports traffic and event logging
- Configurable as a DHCP server on your network
- Administrators can block specific internal users' Internet access with filtering
- Supports SNMP ver. 2.0 and SNMP MIB I and II

# Global leader in Secure Internet Connectivity

*The company's impressive portfolio includes Diva ADSL and Diva ISDN access products, Media Gateways for Fax, Remote Access, Voice (including VoIP) and Unified Messaging. Eicon cards provide solutions for WAN Communications including Frame Relay, Leased Lines and X.25.*

Eicon distributes, markets and supports its products in more than 80 countries worldwide through a network of leading telecommunication companies (telcos), Internet Service Providers (ISPs), channel partners and original equipment manufacturers (OEMs). More information about Eicon Networks is available at [www.eicon.com](http://www.eicon.com).

The Diva solutions for desktop computers are the market leaders in 8 European countries where ISDN has experienced its most explosive growth. The Diva line includes two basic product groups: the **Diva Client solutions** & the **Diva Server solutions**. The **Diva DSL** is the choice for sharing a DSL Internet Connections for SMB's and provides ultimate VPN transparency for any choice of VPN including all well known IPSec implementations.

## DIVA CLIENT SOLUTIONS

Diva offers a broad selection of ISDN modems for PC's and notebooks. External, internal and PC Card products offer convenient options for digital-only connections or the combination of digital and analog over ISDN (up to 56 Kbps).



## DIVA SERVER SOLUTIONS

Eicon's ISDN Server cards offer high-speed Basic Rate Interface (BRI or ISDN2) for regular ISDN and Primary Rate Interface ISDN (PRI or ISDN30) connectivity to multiple, simultaneous remote users and LAN-to-LAN communications.



Based on an open systems architecture, industry leading fax and unified messaging applications integrate easily and with the Diva server Voice adapters, voice over IP functionality is added to create an economical integrated VoIP Gateway. The flexibility of the Diva Server cards provides network administrators with a simple, cost-effective and open communications solution. Diva Server cards are available in single BRI, 4x BRI and PRI format. Up to 4 cards can be simultaneously installed per server.

### → TYPICAL DIVA SERVER APPLICATIONS

- Remote Access Server
- Fax Server
- Unified Messaging
- Interactive Voice Response systems
- Computer Telephony Integration
- Voice Recognition and VoIP

### → SUPPORTED OS

- Windows XP
- Windows 2000
- Windows NT
- Microsoft Small Business Server (NT + W2K)
- Linux (RedHat and SuSE)

More information about Diva Server cards:  
<http://www.eicon.com/divaserver>

## DIVA 2440 ADSL ROUTER

The Eicon Diva 2440 ADSL router is the ideal solution to connect a number of users to the Internet. A standard ADSL service can be shared by up to 254 concurrent users. The Diva 2440 is very easy to use via Eicon Connect & Surf™ and reduces the installation time to a minimum. The Diva 2440 ADSL Router can operate in two modes depending on the application used. Using the normal mode, the built-in Firewall options meet the basic requirements of SMB's to protect a network

from the outside world while maintaining the flexibility to run specific applications. This applies to customers who like to host e.g. their own WEB- or Mailserver.

### → NEW! EICON DIRECT IPTM MODE FOR VPN OVER ADSL

Most IPSec VPN/Firewall implementations need 100% transparent Internet Access connections. In order to achieve such a connection special Internet Access services have to be used that include a range of IP addresses. Standard ADSL services are often cheaper and easier to get but can't normally be used because they provide only a single IP address which is consumed by the ADSL router. Eicon Networks recognized this problem and developed an intelligent feature that saves the IP address for usage on the VPN server or Firewall instead.



### → ADSL OFFICE CAN NOW BE USED FOR ANY VPN SOLUTION

The Direct IPTM functionality has been successfully tested on several ADSL services in Europe, including ADSL Office in Belgium using well known high-end IPSec VPN products.

The Diva 2440 offers an uncompromised applicability:

- Normal mode connects a SMB to the Internet with basic security
- Normal mode allows to host servers locally
- Direct IPTM enables VPN on any ADSL line with a single fixed IP address
- Direct IPTM allows to host servers behind the Firewall.

If you'd like to know more about the Diva 2440 or Direct IPTM please visit:  
<http://www.eicon.com/diva2440>

INGRAM MICRO SKU  
 → 702 0371 Diva 2440 ADSL Router

# Compaq brought to you by hp

## Compaq Servers

### PROLIANT ML310

→ **PROLIANT RELIABILITY AND EASE OF USE FOR SOPHISTICATED SMALL-BUSINESS APPLICATIONS AND BRANCH OFFICE SOLUTIONS**

The ProLiant ML310 is a Pentium4-based ProLiant in the same chassis as the ML330 that delivers ProLiant reliability together with best-in-class data protection and management to simplify ownership. Purchasing a ProLiant server is making an investment in your company's future.

### INSIDE THE BOX

→ **PROLIANT RELIABILITY**

- ProLiant system testing and solutions integration
- ProLiant global pre-failure warranty.

→ **EASY OWNERSHIP**

- Insight Manager support
- SmartStart and ProLiant Essentials support
- RILOE II support for remote management
- Diagnostic LEDs on the motherboard for easier serviceability
- Tool-free access to internal system components.

→ **BEST-IN-CLASS DATA PROTECTION**

- Integrated ATA RAID 0, 1, and 1+0
- SmartArray RAID array controller support
- Industry-leading tape back-up support.

### PROLIANT ML350 GENERATION 3

An expandable rack or tower platform delivering affordable 2-way performance and essential availability to corporate workgroups and growing businesses.

### KEY BENEFITS

- Affordable 2-way performance
- Essential availability your business can depend on
- Headroom for corporate workgroups and growing businesses.



PROLIANT ML310

PROLIANT ML350

### FEATURES

- Multiple configurations that accommodate changing business needs and protect customer investments with a growth path to future technologies and upgrades. The expandability within its 5U chassis complemented with essential availability options gives you choices and allows upgrades and expansion as your business needs change without replacing your hardware.
- Delivering flexibility and expandability with affordable performance and essential availability features allows businesses to standardize on one server for a multitude of business needs resulting in efficient server management.

### WHAT'S NEW

- Up to two Intel Xeon Flip Chip PGA processors with 512k on-die cache
- PC2100 ECC DDR SDRAM, Interleaving Capable
- **PCI-X technology.**

### PROLIANT ML370 GENERATION 3

The most versatile, easy to manage 2-way platform that enables IT infrastructures to adapt to today's demanding business requirements. A wide variety of configuration flexibility and powerful integrated Lights-Out management makes it the ideal server for the corporate data center to the remote site.

### KEY BENEFITS

- Integrated Virtual Presence and tool-free serviceability ideal for corporate environments
- Performance and availability to maximize productivity
- A versatile platform satisfying a full spectrum of business solutions.

### WHAT'S NEW

- **MANAGE SEAMLESSLY FROM ANYWHERE, ANYTIME**
- Powerful integrated Lights Out (iLO) technology embedded on every ML370 G3 server.



## FEATURES

- By utilizing the integrated Lights-Out feature, server management just became easier and less costly. IT staff can manage any number of servers via a network browser from anywhere at anytime hence reducing travel costs. It is OS independent and offers such features as virtual power and health monitoring
- The ML370 G3 offers maximum headroom to grow with changing business environments – 2P, 6 open PCI-X slots, up to 12 GB memory and multiple availability features giving customers ultimate flexibility in their configuration to suit their ever changing business needs. Due to the versatility of this server, companies can standardize on one platform for a range of applications
- The ML370 G3 offers the latest in performance features to reduce bottlenecks due to IO throughput

### → LATEST PERFORMANCE FEATURES COUPLED WITH ENTERPRISE CLASS UPTIME

- Xeon processors, PCI-X, and DDR memory for maximum data throughput and productivity
- Hot plug & redundant components everywhere: drives, power supplies, cooling fans
- Online spare memory
- Redundant ROM with remote ROM flash capability.

## MODEL SPECIFICATION COMPARISON

	ML370 G3	ML350 G3	ML310
Processor support	2P Intel Xeon, 400 MHz FSB	2P Intel Xeon, 400 MHz FSB	1P Intel Pentium 4
Chipset	ServerWorks GC LE	ServerWorks GC LE	Serverworks GC SL
RAM Std/Max	512 MB/12 GB DDR SDRAM, (4) sockets, interleaving standard On-Line Spare memory capable	256 MB/8 GB DDR SDRAM, (4) sockets, interleaving capable	128 MB/4 GB DDR SDRAM, (4) sockets, no interleaving
Int. HDD Controller	dual channel U3	dual channel U3	single channel U3 or dual channel ATA-100 w/Int. ATA RAID
Hard Drive only bays	(6) 1" HP HDDs	(6) 1" HP HDDs	(2) 1" NHP HDDs
Rem media bays	(4) 1.6" (2 avail), DAT/AIT/2-Bay HP drive cage/NHP HDD	(4) 1.6" (2 avail), DAT/AIT/2-Bay HP drive cage/NHP HDD	(4) 1.6" (3 avail), DAT/AIT/2-Bay HP drive cage/NHP HDD
I/O slots	6x 64-bit 100 MHz PCI-X 2 slot are hot plug PCI	(5) avail: (4) 64-bit 100 MHz PCI-X 1x 32-bit 33 MHz PCI	(4) 64-bit 33 MHz PCI
Integrated NIC	Broadcom 10/100/1000	Broadcom 10/100/1000	Broadcom 10/100/1000
Chassis	(5U) T & R models; Rack conv. Kit, Quick Deploy Rails	(5U) T & R models; Rack conv. Kit, Quick Deploy Rails	(5U) T models; Rack enabling kit, Quick Deploy Rails
RILOE II support	Yes	Yes	Yes
Smart Array Support	Yes	Yes	Yes
ProLiant Essentials support	Yes	Yes	Yes
RPS	Standard 500W HP, Optional Redundant 1+1	Standard 350W HP, Optional Redundant 1+1	No
Redundant Fans	Standard Hot plug fans, optional redundant	No	No
Warranty	3-3-3	3-3-3	1-1-1; opt. upgrade 3-3-3

# hp procurve switch 5300xl series

Designed to accommodate the most demanding network needs, the new HP Procurve Switch 5300xl series delivers the fastest layer 2/3/4 switches for the price of competitor's layer 2 modular switches.

The Switch 5300xl series offers scalable, layer 3 wire-speed switching in compact, 4- or 8-slot modular form factors. These convergence-ready switches provide flexibility, high port density, free software upgrades, and a lifetime warranty. The easy-to-use Switch 5300xl series is the latest in technology with unparalleled investment protection and lowest total cost of ownership.

## hp ProCurve SWITCH 5308XL

→ THE hp ProCurve SWITCH 5308XL PROVIDES UP TO 32 GIGABIT ETHERNET PORTS OR 192 10/100-TX WITH HP AUTO-MDI-X PORTS

## hp ProCurve SWITCH 5348XL

→ THE hp ProCurve SWITCH 5348XL BUNDLES 48 10/100-TX PORTS IN THE 4 SLOT 5304XL CHASSIS, LEAVING 2 OPEN SLOTS

## hp ProCurve SWITCH 5372XL

→ THE hp ProCurve SWITCH 5372XL BUNDLES 72 10/100-TX PORTS IN THE 8 SLOT 5308XL CHASSIS, LEAVING 5 OPEN SLOTS

## FEATURES AND BENEFITS

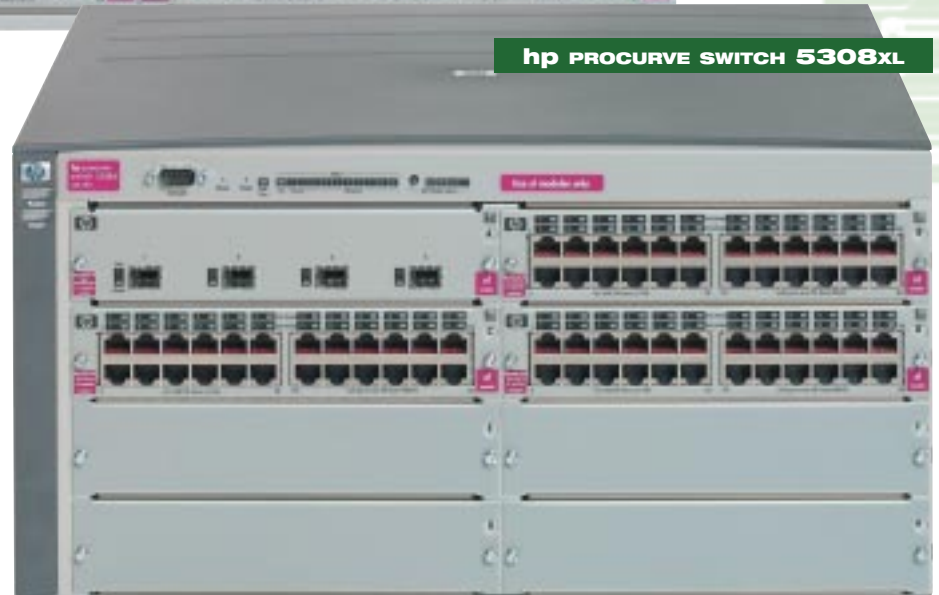
- **Non-blocking architecture:** 76.8 Gbps non-blocking crossbar switching fabric provides wire-speed intra- and inter-module switching with up to 48 Mpps throughput
- **hp switch meshing:** dynamically load-balances across multiple active redundant links to increase available aggregate bandwidth
- **IP layer 3 routing:** provides routing of IP at media speed supports static routes, RIP, RIPv2, and OSPF
- **IP multicast (data-driven IGMP):** automatically prevents flooding of IP multicast traffic



The Switch 5300xl series are voice-, video-, and data-ready switches that offer prioritization and traffic-shaping features that bring full convergence to the desktop. Access and management security features protect your network against unauthorized access and help protect your infrastructure. hp Switch Meshing technology optimizes network performance by opening up all available paths, automatically finding the fastest path, and dynamically load-balancing traffic to make full use of the existing infrastructure.

## hp ProCurve SWITCH 5304XL

→ THE hp ProCurve SWITCH 5304XL PROVIDES UP TO 16 GIGABIT ETHERNET PORTS OR 96 10/100-TX WITH HP AUTO-MDI-X PORTS



For more information:  
<http://www.hp.be>



- **Rapid Convergence Spanning Tree Protocol:** increases network uptime through faster recovery from failed links
- **Cisco Fast EtherChannel® (FEC):** supports Cisco's proprietary FEC trunking protocol
- **Hot-swappable modules:** permits modules and mini-GBICs to be added or swapped without interrupting the network
- **Dual flash images:** provides independent primary and secondary OS files for backup while upgrading
- **Optional redundant power supply:** provides uninterrupted power
- **VLAN support and tagging:** supports complete 802.1Q and 256 VLANs simultaneously
- **Access control lists (ACL):** provides IP layer 3 filtering and prioritization
- **Port security:** prevents unauthorized access using MAC address lockdown
- **Source port filtering:** allows only specified ports to communicate with each other
- **RMON, extended RMON, and switch monitoring (SMON):** provides advanced monitoring and reporting capabilities for statistics, history, alarms, and events
- **hp auto-MDIX:** automatically adjusts for straight-through or crossover cables on all 10/100-TX and 100/1000-T ports
- **Lifetime Software Updates:** for as long as software updates are available for these switches, they can be downloaded from the hp web site for free
- **Lifetime warranty:** for as long as you own the product, with next-business-day advance replacement.

## SPECIFICATIONS

### → STANDARD CONFIGURATION

- Switch 5304xl: 4-slot chassis with integrated routing engine, power supply  
4-slot chassis: maximum of 96x 10/100-TX ports or 16 Gigabit ports
- Switch 5308xl: 8-slot chassis with integrated routing engine, power supply  
8-slot chassis: maximum of 192x 10/100-TX ports or 32 Gigabit ports
- Switch 5348xl: 4-slot chassis with integrated routing engine, power supply,  
48x 10/100-TX ports (2x J4820A)
- Switch 5372xl: 8-slot chassis with integrated routing engine, power supply,  
72x 10/100-TX ports (3x J4820A)

### → MEMORY AND PROCESSOR

- Fabric: Motorola PowerPC @ 200 MHz, 12 MB flash, 32 MB SDRAM
- Module: ARM7 @ 66 MHz, 128 KB flash, 128 KB SRAM, 18 MB RDRAM
- Packet buffer size: 36 MB
- Dual flash

### → PERFORMANCE

- Throughput:  
Switch 5308xl and 5372xl: 48 Mpps  
Switch 5304xl and 5348xl: 24 Mpps  
Switch fabric speed: 76.8 Gbps

### → MOUNTING

- Mounts in an EIA-standard 19-in telco rack or equipment cabinet (mounting hardware included)
- Horizontal surface mounting only

### → MANAGEMENT

- hp Tootools for Hubs & Switches included

## ACCESSORIES

hp procurve switch 5304xl & 5308xl with respectively 4 & 8 open module slots

### → MODULES

- hp Procurve Switch XL 10/100-TX module (J4820A)
- hp Procurve Switch XL 100/1000-T module (J4821A)
- hp Procurve Switch XL mini-GBIC module (J4878A)

### → MINI-GBICs

- hp Procurve Gigabit-SX-LC mini-GBIC (J4858A)
- hp Procurve Gigabit-LX-LC mini-GBIC (J4859A)
- hp Procurve Gigabit-LH-LC mini-GBIC (J4860A)

### → RPS

- hp Procurve Switch redundant power supply (J4839A)

# Servers, Networking and Storage group



**SNS**



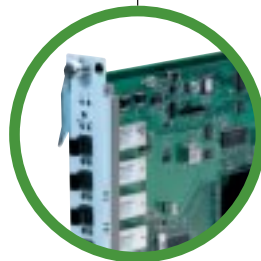
**LOOKING FOR MORE INFORMATION  
ON NETWORK PRODUCTS?  
SERVERS? SECURITY?**

**CALL THE INGRAM MICRO  
SNS GROUP!**

→ TEL.: + 32 2 254.93.77

→ FAX: + 32 2 254.99.04

→ E-MAIL: [SNS@INGRAMMICRO.BE](mailto:SNS@INGRAMMICRO.BE)



You can be certain of professional advice  
in selecting the ideal network product to suit  
your needs,  
or in setting up a total network solution.

**WWW.INGRAMMICRO.BE** And click on SNS to get  
the latest news on the SNS products, trainings, etc...



## WHO IS THE SNS GROUP?

SNS stands for Server Networking & Storage. Ingram Micro's SNS-group team will take care of all your Server Networking, Storage and Security requirements.

## WHAT CAN SNS DO FOR YOU?

The SNS group can help you to build entire networking solutions comprising servers, networking devices, storage modules and software packages. We advise you on the best quality solutions and the best price solutions regarding your needs.

### → WE HAVE DEDICATED PEOPLE IN THE FOLLOWING AREAS

- 1 hp Specialist: 02/254.93.71
- 2 IBM Specialist: 02/254.93.74
- 3 Fujitsu Siemens specialist: 02/254.99.65
- 4 Networking Specialist: 02/254.93.73
- 5 Security: 02/254.99.85
- 6 General number: 02/254.93.77

The SNS-group can also offer assistance regarding installation matters and has its own specialised technicians. Whether it be the actual installation or guidance and assistance during the installation, you can rely on our services.

For technical matters, questions regarding installation or information on our tariffs regarding installation assistance, please call 02/254.93.72. This service is operational daily from 9.00am to 12.00am.

## WHAT ELSE CAN THE SNS GROUP DO FOR YOU?

The SNS-group offers assistance in staff training. In February this year we initiated the Forum concept. The Forum is a full day session, free of charge, concentrating on a particular subject. During the first Forum we focused mainly on general Server, Networking, Storage and Security topics. The underlying tone of the training sessions was commercial and we're proud to report that we had more than 100 attendees and covered some 30 topics: a first-time success!

**SNS**  
SERVERS, NETWORKING & STORAGE GROUP

**WIRELESS & SECURITY FORUM**  
WEDNESDAY 13 NOVEMBER 2002

Today, the Ingram Micro SNS-group announces the 2nd SNS Forum, set to take place on 13 November 2002.

A date certainly to be noted down in your diary since this Forum will be covering a really "hot topic": **Wireless & Security**. You will have the opportunity to follow both commercial and/or technical training sessions.

**INGRAM  
MICRO**®

The Forum's concept leaves you the freedom to elaborate your own training schedule. You pick the sessions you'd like to attend and Ingram Micro organises it for you. Please visit the SNS website to check the available sessions and register.

Place to be: De Montil, Moortelstraat 8,  
1790 Essene (Affligem)  
Visit our website to check  
available sessions and to register:  
<http://www.ingrammicro.be>

## Get a 802.11b Boost with AirPlus! Up to 22 Mbps!

D-Link delivers another performance breakthrough in wireless connectivity with the delivery of D-Link AirPlus enhanced 2.4 GHz wireless networking products. The D-Link AirPlus line is based on advanced 802.11b silicon chip technology from Texas Instruments, delivers data transfer rate capabilities up to 22 Megabits per second (Mbps) and is available at hot prices too.

The D-Link AirPlus Wireless products provide up to a 20% performance increase within the popular 802.11b 11 Mbps standard. Additionally, even greater performance can be achieved when the TI Packet Binary Convolutional Coding (PBCCTM) modulation option is employed, which allows users to take full advantage of the fastest wireless speeds available in the 2.4 GHz radio spectrum and remain compatible with existing 802.11b networks. Increased security and privacy are provided by the 256-bit WEP encryption and MAC address authentication. Fully compliant with the IEEE 802.11b standard, the D-Link AirPlus wireless networking solutions are 100% interoperable with all existing 802.11b wireless connectivity devices.

### → D-LINK AIRPLUS ENHANCED 2.4 GHZ WIRELESS ROUTER DI-614+

- Up to 22 Mbps 802.11b Compatible Advanced Firewall & Parental Control Share Internet with Built-In 4-Port Switch

### → D-LINK AIRPLUS ENHANCED 2.4 GHZ WIRELESS ACCESS POINT DWL-900AP+

- 4 Different Operation Modes Auto IP Address Assignment Fully 802.11b Compatible

### → D-LINK AIRPLUS ENHANCED 2.4 GHZ WIRELESS CARDBUS ADAPTER DWL-650+

- Up to 22 Mbps with AirPlus Products Fully 802.11b Compatible Improved Performance

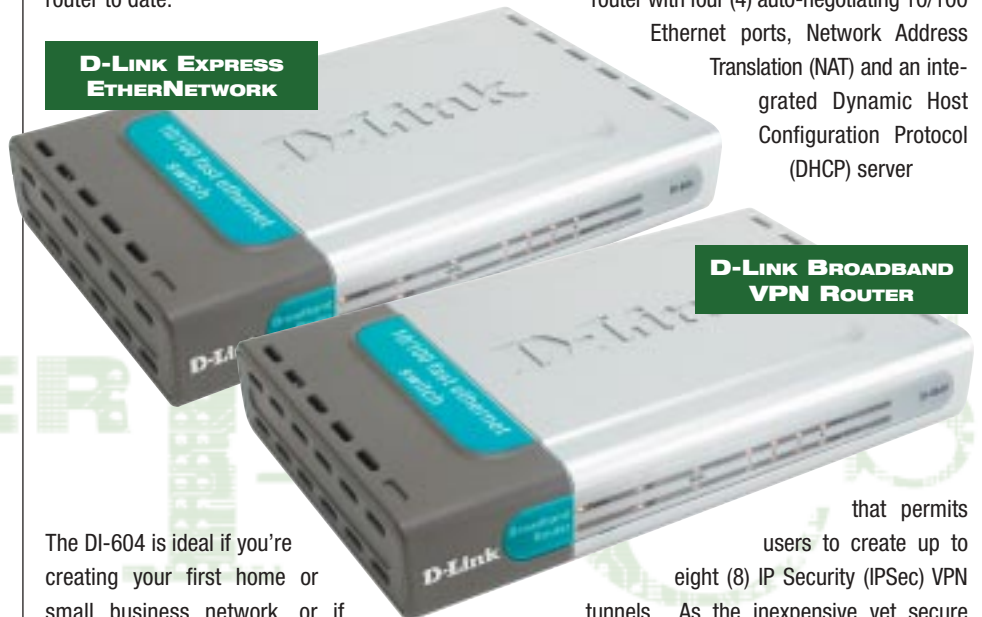
### → D-LINK AIRPLUS ENHANCED 2.4 GHZ WIRELESS PCI ADAPTER DWL-520+

- Up to 22 Mbps with AirPlus Products Fully 802.11b Compatible Improved Performance

### D-LINK EXPRESS ETHERNETWORK™ 4-PORT ETHERNET BROADBAND ROUTER (DI-604)

The DI-604 combines the latest advancements in chip technology, low-cost design and manufacturing with new, feature-rich firewall and network management controls to give you quite possibly the most advanced, yet affordable Ethernet router to date.

#### D-LINK EXPRESS ETHERNETWORK



#### D-LINK BROADBAND VPN ROUTER

The DI-604 is ideal if you're creating your first home or small business network, or if you're a more advanced user looking for additional management settings.

A simple, yet intelligent, web-based setup wizard makes the DI-604 easy for anyone to quickly and securely connect computers to share a high-speed Internet connection, files, resources, games or just to communicate.

The DI-604 has an integrated 4-port switch with 10/100 Ethernet ports for directly connecting up to four computers. And one Ethernet cable is included with the DI-604, just to get you started.

So, whether you're a college student who wants to network with friends and roommates, an executive working at home or in a small office, or a concerned parent who just wants to have more control over how your children access the Internet, then the D-Link Express EtherNetwork DI-604 is the networking solution for you, even if you don't know anything about networking.

### D-LINK BROADBAND VPN ROUTER (DI-804V)

D-Link is introducing the new Universal Plug and Play (UPnP) enabled D-Link DI-804V Virtual Private Network (VPN) Router, which provides secure off-site access to information.

An ideal solution for linking two or more remote networks, the D-Link DI-804V is a powerful VPN router with four (4) auto-negotiating 10/100 Ethernet ports, Network Address Translation (NAT) and an integrated Dynamic Host Configuration Protocol (DHCP) server

that permits users to create up to eight (8) IP Security (IPSec) VPN tunnels. As the inexpensive yet secure alternative to point-to-point leased lines, a VPN tunnel connects separate networks in multiple locations enabling the creation of one seamless network. VPN tunnels combined with the high-strength Triple Data Encryption Standard (3DES) encryption and Stateful Packet Inspection (SPI) features of the DI-804V provide the security required when transferring sensitive data over the Internet.

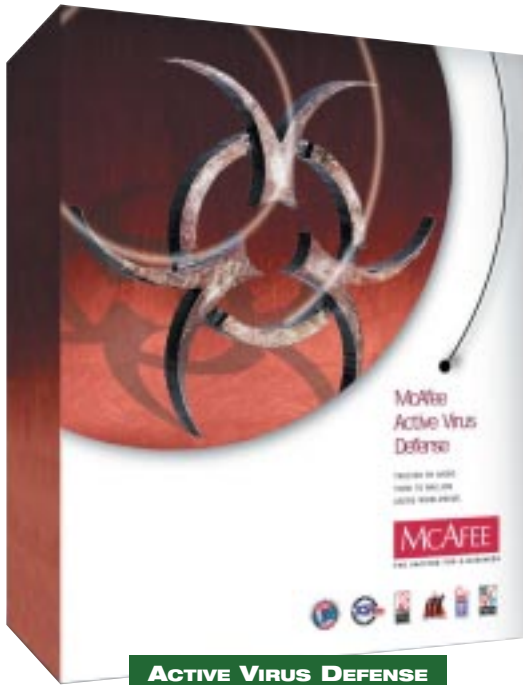
A web-based configuration utility allows for easy setup and provides an OS independent platform for setup and management of the D-Link DI-804V from any PC connected to the network.

Additionally, the UPnP support lets computers running Windows ME or Windows XP automatically recognize, setup and configure the VPN Router for opening and closing ports necessary for full functionality in programs such as NetMeeting without compromising security.

# D-Link®

Building Networks for People

# Active Virus Defense Small Business Edition (SBE)



Over the past two years, virus threats have become increasingly sophisticated. From Melissa, through to Nimda and Code Red, these viruses are capable of re-occurring in networks where even one computer's protection is not completely up-to-date. Most vulnerable are those with the least resources dedicated to anti-virus management – businesses with 250 users or less.

The **ultimate multi-tiered solution for total protection**: VirusScan and NetShield for your desktops and servers, PLUS GroupShield to preserve your Exchange or Notes servers and WebShield to strip viruses from your SMTP mail gateway. And, naturally, ePolicy Orchestrator Small Business Edition coordinates your defenses.

**INGRAM MICRO SKU**

- L55 ZC69 Active Virus Defense 4.5 5 user perpetual - UK
- L55 ZC70 Active Virus Defense 4.5 5 user 2.1 year - UK
- L55 ZC71 Active Virus Defense 4.5 10 user perpetual - UK
- L55 ZC72 Active Virus Defense 4.5 10 user 2.1 year - UK
- L55 ZC73 Active Virus Defense 4.5 25 user perpetual - UK
- L55 ZC74 Active Virus Defense 4.5 25 user 2.1 year - UK



# Discover our new range of routers



The Proxima PR-I ADSL POTS router & ISDN router have an RJ 45 LAN ethernet port which can be connected with an Ethernet hub or switch and is meant for multi-PC connections. The routers possess an integrated NAT function, allowing to share and secure network addresses. Introducing and configuring static public IP addresses is possible.

**PROXIMA PR-I ADSL POTS ROUTER**

- The Proxima PR-I POTS has an integrated modem function for analogue ADSL lines.

**PROXIMA PR-I ADSL ISDN ROUTER**

- The Proxima PR-I ISDN has an integrated modem functioning for Alcatel proprietary ISDN standard for Belgium! The device also is available in an annex B version.

**PROXIMA PR-I 4 PORT SHARING BOX**

- The Proxima PR-I 4 PORT SHARING BOX possesses an integrated NAT function, allowing to share and secure network addresses. Introducing and configuring static public and private IP addresses is possible. Integrated is a 4 port switch. The Proxima PR-I 4 PORT SHARING BOX doesn't have an integrated modem function.



**FOR ALL ROUTERS**

→ **MANAGEMENT SPECIFICATIONS**

- Web browsed and Telnet management (& console management)
- Operating System independent (Mac, Linux, Windows, Unix)

→ **ROUTING SPECIFICATIONS**

- NAT featuring IP-masquerading and port mapping
- Built-in PPPoE and PPPoA clients
- Virtual Private Networking pass through
- DHCP server dedicating network addresses
- Ethernet 10Base-T interface supporting TCP/IP
- Possibility to introduce static public IP addresses.

**INGRAM MICRO SKU**

- K30 0050 Proxima PR-I ADSL POTS Router
- K30 0051 Proxima PR-I ADSL ISDN
- K30 0053 Broadband DSL/Cable Router



## MAX OFFICE

→ THE FIRST ALL-IN-ONE, READY TO USE APPLIANCE SERVER DESIGNED FOR COLLABORATIVE WORK

Right Vision, the number one manufacturer of Internet Appliance servers in Europe, in partnership with Microsoft, has launched MAX OFFICE, the first multi-function Appliance Server designed for collaborative work.

Ideal for companies with 5 to 15 stations, this ready to use integrated solution, based on Windows technologies, lets you network your computers and make a common work space (Virtual Desktop, shared directories and printers), an e-mail system and shared Internet access protected by a firewall available to them in a matter of minutes.



Max OFFICE

With its integrated Microsoft® technologies, MAX OFFICE adapts perfectly to your existing computer equipment by providing optimum compatibility with your PC or Macintosh® workstations.

→ ALL OF THE PROFESSIONAL MICROSOFT TOOLS WITH THE SIMPLICITY OF USING AN APPLIANCE!

- MAX OFFICE is based on Microsoft Small Business Server, which includes:
- Windows® 2000 Server
- Exchange® 2000 Server
- Microsoft® IIS
- ISA Server® 2000
- SQL Server®



## MAX OFFICE BENEFITS

→ THE SIMPLICITY OF AN APPLIANCE WITH THE POWER OF A CONVENTIONAL SERVER!

- Easy installation and integration
- Internet services and pre-installed and pre-configured
- Reliability and performance
- Optimum quality/price ratio
- Compatible with Windows and Macintosh environments.



→ ALL THE TOOLS YOUR COMPANY NEEDS IN A FEW MOUSE CLICKS

- All-in-one with Internet/intranet/extranet services
- Shared secure Internet access for the entire company
- Collaborative work and file sharing over the network
- Printer sharing for the workgroup
- Internal and external e-mail system with shared files (Microsoft Exchange)
- Virtual Desktop: remote access to company information
- Optimum security: Firewall, proxy and intrusion detection
- Hosting of secure Web sites and FTP servers
- Compatible with your existing workstations because the product is based on Microsoft technologies
- Significant market opportunities over the next five years
- Companies with 5 to 50 employees do not have much equipment
- A potential market of 230,000 companies (or 95% of companies)
- Unique opportunities for Resellers/Integrators

- On average, only 22% of them have a local network!
- Propose a unique product on the market (the first multi-function Internet Server Appliance based on Microsoft technologies) that is durable and based on Windows
- Win new customers (small companies that are setting up networks)
- Increase your margins by providing complementary products (network printers, Internet access, remote support, additional PC clients, portables, services, etc.)
- Benefit from ready to use marketing tools (designed in collaboration with Microsoft) to help you sell this product.

→ TRY MAX OFFICE ON-LINE AT [HTTP://WWW.RIGHTVISION.COM// DEMOMAXOFFICE/](http://www.rightvision.com//DemoMaxOffice/)

- 2 models available dependent on the size of the company:
  - up to 15 connected PCs - MAX OFFICE SMALL EDITION
  - up to 50 connected PCs - MAX OFFICE MEDIUM EDITION

You can call the SNS group to know more:  
 SNS group  
 (Server Networking & Storage group)  
 Tel.: +32 (0)2 254 93 77  
 e-mail: [sns@ingrammicro.be](mailto:sns@ingrammicro.be)



SERVERS, NETWORKING & STORAGE GROUP

SUGGESTED RETAIL PRICES

- L79 0013 MAX OFFICE SE: 4.190,00€
- Tbc MAX OFFICE ME: 6.390,00€



The Internet Appliances Company