

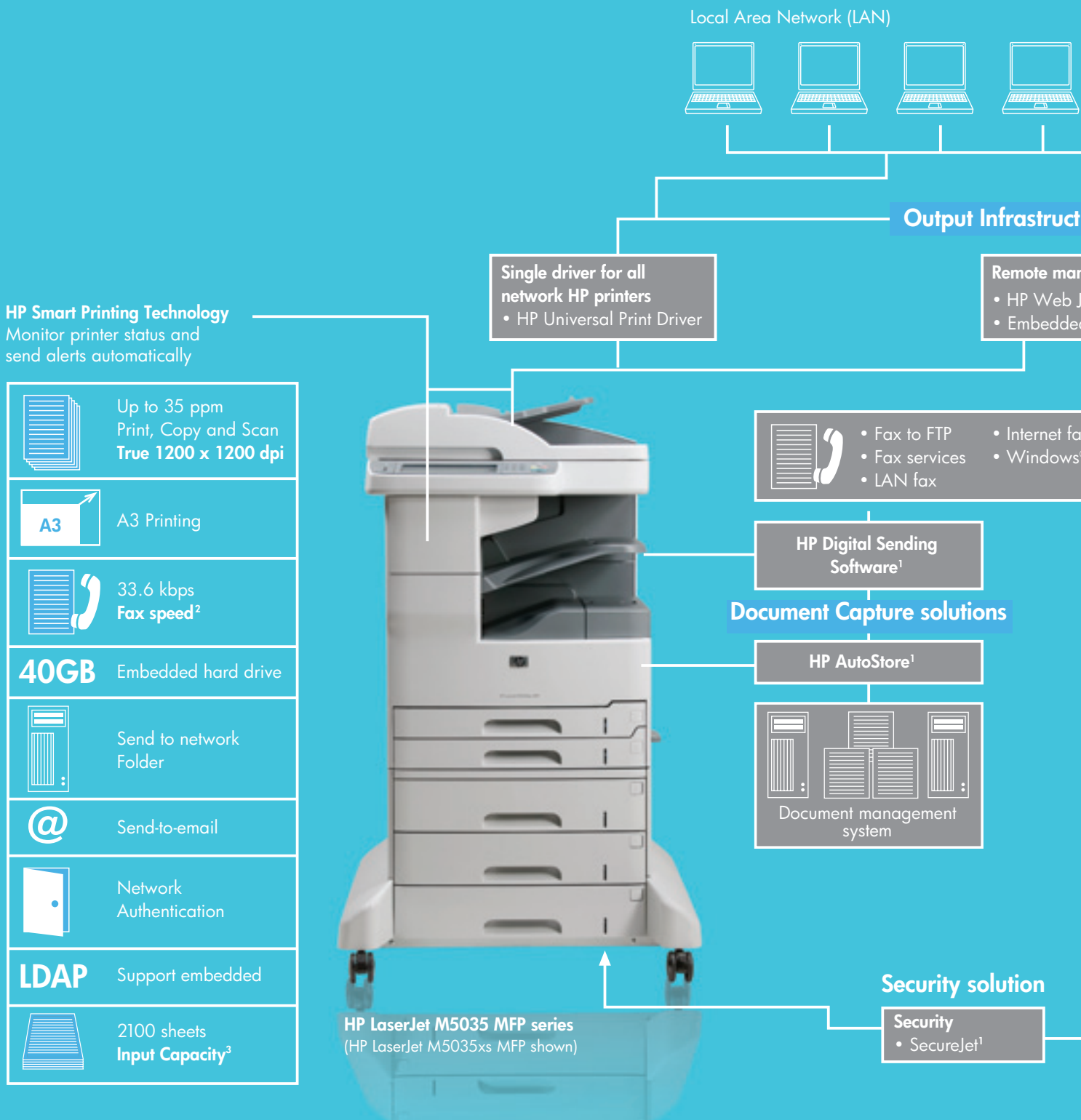


HP LaserJet M5025 MFP and M5035 MFP series

For all your wide-format printing, scanning, faxing, copying and digital sending needs



The **HP LaserJet M5035 MFP series** is a convenient, wide-format, multifunction that helps workgroup productivity soar with print, copy, scan, fax, and multiple digital sending functions —in one reliable, cost-effective device.



HP Services⁴



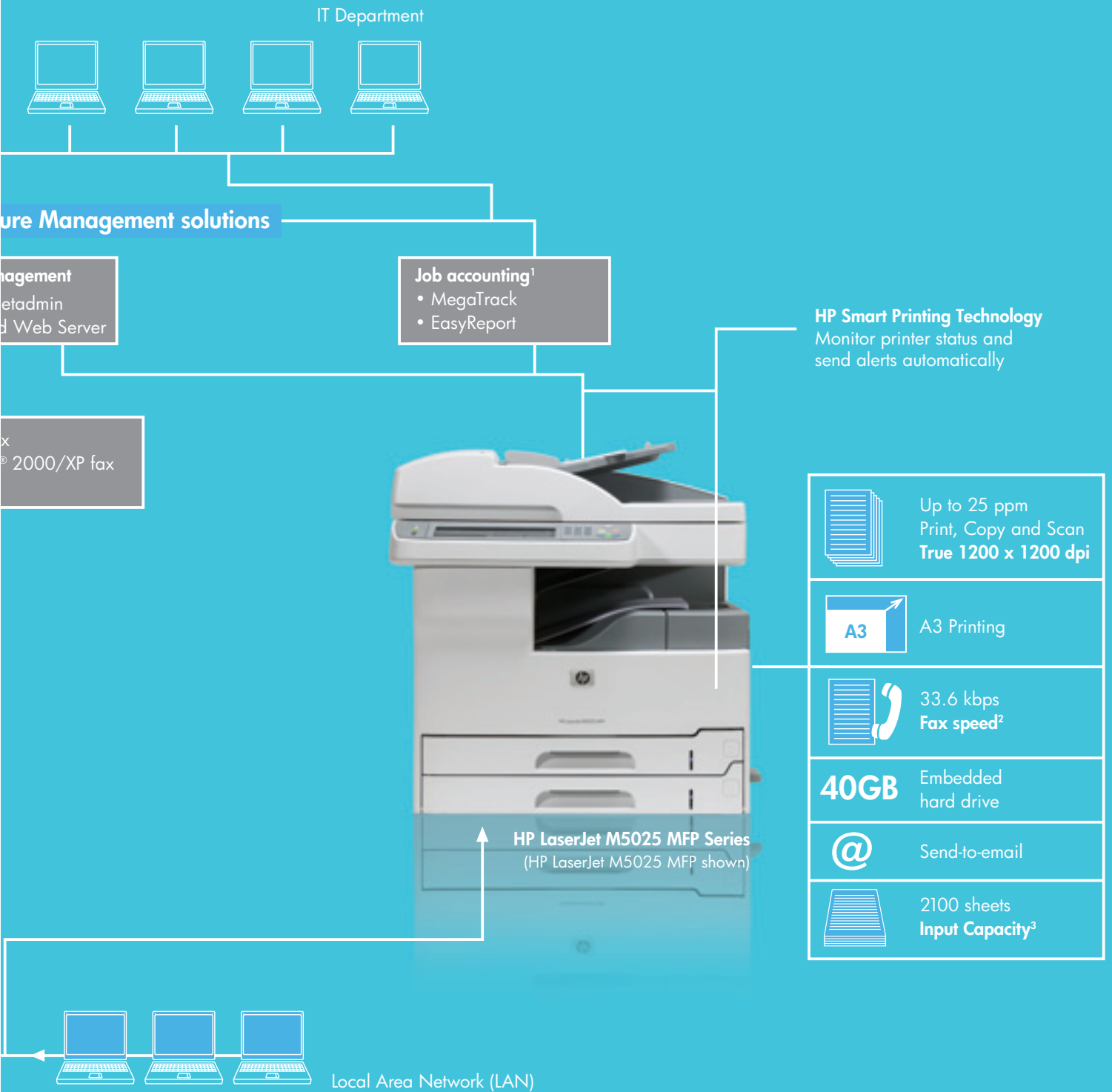
Basic Support services
For businesses of all sizes



Advanced Smart Print Services
Standardised, configurable, scalable services with predictable monthly payments



Refreshingly easy-to-use and very affordable, the **HP LaserJet M5025 MFP series** handles all your A3 printing and copying needs, while offering you bonuses such as send-to-email and an optional fax functionality.



Superior

Managed Print Services

Fully customisable, comprehensive, scalable portfolio of services that allows you to optimise your imaging and printing environment

¹ Optional software. Only available with M5035 MFP series.

² Optional for M5025 and M5035. Standard for M5035x and M5035xs.

³ With optional input trays. Sold separately.

⁴ Optional. See www.hp.com/support for extended options.

Comprehensive multifunction productivity for busy workgroups

High-speed, professional results

The M5035 MFP series helps you save time and money with print and copy speeds of up to 35 ppm¹. Instant-on technology slashes warm-up time from minutes to seconds, to give you a fast first page.

Big on impact. Not on size.

Thanks to the smaller footprint of the M5035 MFP series, you can place it close to workgroups, right where they need it—and thus have easy access to the impact of high quality A3 printing.

Introduce documents seamlessly into workflows

The M5035 MFP series comes standard with send-to-email and send-to-network-folder capabilities, including LDAP and address book support. Optional HP Digital Sending Software (DSS)² lets you incorporate paper documents into electronic business processes, and send them—quickly and securely—to printers, ftp sites, and fax services. Using the optional HP AutoStore software², you can also easily route information to document management applications.

Cost-effective output through duplex printing/copying/scanning

To give you wide-format, two-sided copying and scanning of double sided originals, the M5035 MFP series comes with a 50-sheet reversing Automatic Document Feeder (ADF). What's more, an automatic two-sided printing unit conserves paper, further reducing office costs.

Speed up your office workflow

460 MHz processor and 256 MB of memory (expandable up to 512 MB on both M5025 and M5035 MFP series models) make complex jobs a breeze. Plus, you also get increased uptime, thanks to a quick return to the original application after printing.

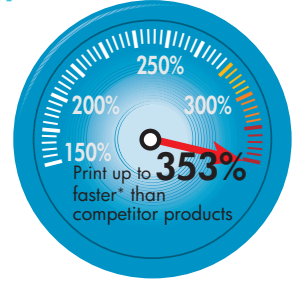
¹ For M5035 MFP series at standard resolution. More complicated pages or higher resolution will take longer.

² Optional software. Only available with the M5035 MFP series.

Instant-on Technology

Faster performance

- Faster first page out
- Eliminates warm-up time



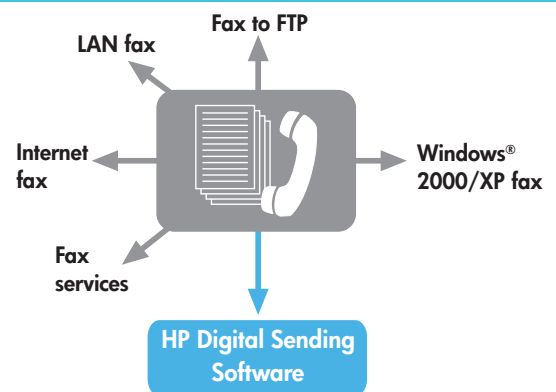
* Quality Logic Printer Performance Test Reports, October, 2004.

Less waiting time for prints with Instant-on technology



A3

A3 printing for maximum effectiveness and impact



Streamline workflow and improve productivity



Double-sided printing on a variety of media

Use the ADF for convenient scanning

Save time and cost with Automatic Document Feeder (ADF) and two-sided documents

Refreshing simplicity, unmatched uptime

Built-in storage for maximum productivity

The M5035 MFP series comes with an embedded hard drive that offers you password-printing capabilities and high-capacity storage of frequently used documents, in addition to proof-and-hold features.

Network without all the work

The M5035 MFP series comes with many features that make it easier for the IT department to deploy and manage print resources: IPv6-ready¹ best-in-class networking and management tools (via the HP Jetdirect Fast Ethernet embedded print server); embedded Web Server performs remote diagnostics, sends e-mail alerts, provides job tracking and accounting, and facilitates convenient supplies reordering; and the HP Universal Print Driver Series for Windows[®] offers a single, intelligent driver that replaces individual drivers for all HP networked printers².

All performance. No interruptions.

The HP print cartridge employs interactive HP Smart Printing Technology³ that optimises print quality, enables convenient status monitoring and troubleshooting, sends “low-supply” alerts, and facilitates easy reordering of supplies⁴.

Ready for business whenever you are

Even if you're the first one in the office, the HP MFP's Automatic Printer Wakeup gets it warmed up and ready for business—much like a coffee maker that's set to start every morning!



40GB
hard disk

Store frequently used documents on built-in hard disk for even more convenience



Networking features that IT department will appreciate

¹ IPv6 is only supported with Microsoft[®] Server 2003[®] and Windows[®] XP[®] (print only).
² The HP Universal Print Driver comes on a CD with the MFP. For supported HP printers only.
³ Using genuine HP supplies ensures availability of all HP printing features.
⁴ Programme availability may vary by country. Internet access required. For more information, visit www.hp.com/learn/suresupply.

All functions within easy reach

Access your MFP's complete feature set with an intuitive control panel that clearly displays all available applications. Easily find your way around with familiar Windows emulation icons and automatic navigation (that visually walks you through Troubleshooting), plus helpful installation wizards.

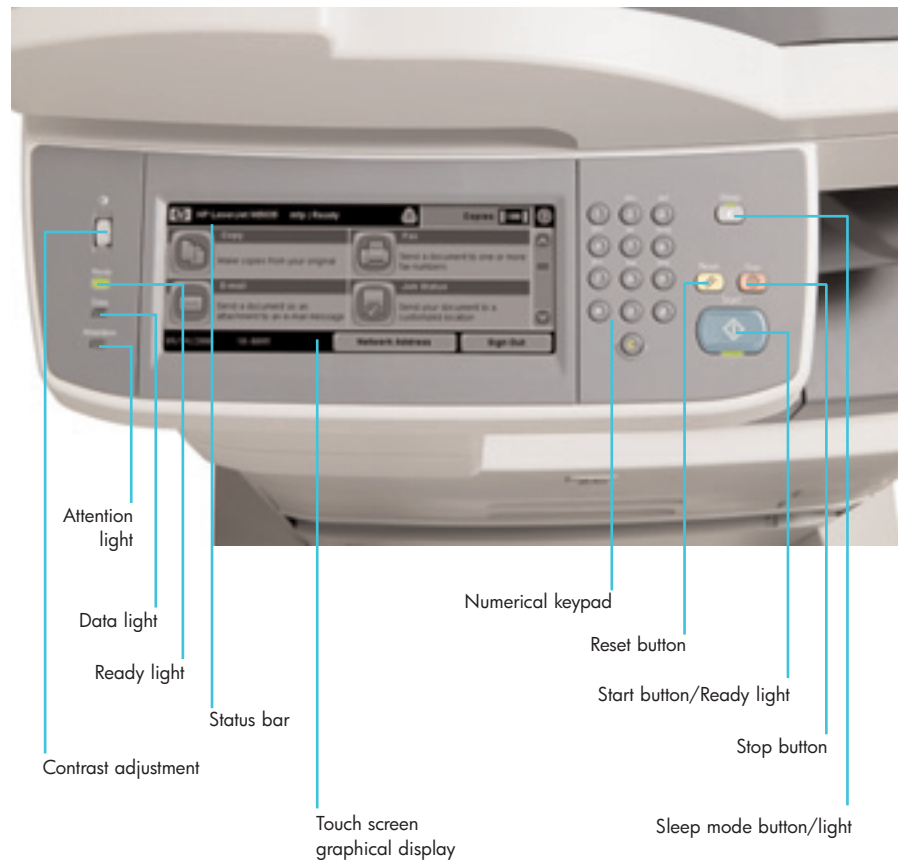
What's more, the control panel is now localised in a variety of Asian languages¹: Traditional Chinese, Simplified Chinese, Korean and Japanese.

Performance the way you want it

The control panel's unique touch-screen graphical display offers all the features you expect from a standard photocopier—along with faxing, scanning, digital sending capabilities, and printing. You can describe the features of the original document, modify the document, and then select the features you desire in the copy.

"Help" that's truly thoughtful and comprehensive

A built-in "Help" system explains how to use each screen. To access it, just touch the "Help" button in the upper-right corner of the screen—you can then search for specific topics and view explanations of the settings available for an individual job.



Room for everything except complaint

Flexible paper handling for greater productivity

An input capacity of up to 2100 sheets² helps your hard-pressed workgroups complete jobs much faster. And the optional automatic 30-sheet stapler/500-sheet stacker widens your output choices.

On-demand expansion of functionality

A Foreign Interface Harness (FIH) port that enables HP and partner solutions, an open EIO slot, and a host USB port help you expand the MFP's capabilities with HP and partner solutions. Enjoy investment protection with optional Gigabit Ethernet, IPsec security, or wireless networking and memory expandability up to 512 MB RAM.

In addition, you can access integrated partner solutions such as additional forms, fonts, barcode printing, and business process solutions for document capture, job accounting, and security.



EXPANSION CAPABILITIES

- Gigabit ethernet
- IPsec security
- Wireless networking
- Additional memory up to 512 MB RAM
- Additional forms, fonts and barcode printing
- Business process solutions for document capture, job accounting and security

¹ Please check with your local HP office for availability.

² With optional three by 500-sheet trays 4,5 and 6.

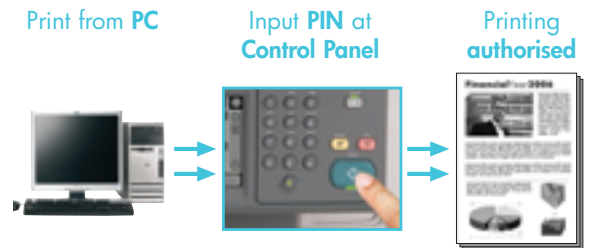
Protect data confidentiality and privacy

Secure printing

Both the M5025 MFP and the M5035 MFP series are designed to protect critical information—in both hard and soft copy—and simplify the way you manage your environment with easy tools and checklists.

Your business is safeguarded in several innovative ways:

- **Private Printing** helps you protect confidential documents by allowing you to hold a job for printing until you release it via a 4-digit Personal Identification Number (PIN) at the MFP's control panel.
- **HP Secure Storage Erase** ensures that the data you eliminate is unrecoverable. Unless otherwise specified, the MFP deletes data from the hard disk when the print job is finished.
- **Network authentication** (LDAP, SMTP) adds another layer of security by allowing administrators to control device access. By requiring users to log in, administrators can limit usage of all the device features, or of just the copying or sending functions.
- Our renowned family of **HP Jetdirect connectivity products** supports a wide range of industry-standard and trusted security protocols, including 802.1x for Wired Networks, SNMPv3 and HTTPS, and Secure IPP (IPP-S) and IPsec.
- Track usage for all printer and MFP models by job, user, device, or application with the **HP Web Jetadmin Report Generation Plug-in**.



Secure printing features help to protect document confidentiality

SECURITY PROTOCOL

- 802.1X for Wired Networks
- SNMPv3
- HTTPS
- Secure IPP (IPP-S)
- IPsec



Integrate easily with a wide range of network and security protocols



HP Web Jetadmin Report Generation Plug-in helps to track usage and can generate reports

HP LaserJet M5035 MFP series

HP LaserJet M5035xs MFP shown

- 1 50-sheet reversing ADF supports two-sided copying and scanning
- 2 Colour flatbed scanner for scanning, copying and faxing jobs
- 5 Two 250-sheet input trays
- 7 Intuitive control panel features a touch-screen graphical display
- 8 250-sheet output bin
- 10 100-sheet multipurpose tray 1
- 11 Right side access door
- 12 USB accessory connection
- 13 A powerful 460 MHz processor and 256 MB of standard memory (expandable up to 512 MB)
- 14 One open EIO slot
- 15 Hi-Speed USB 2.0 port
- 16 Security lock slot
- 17 Foreign Interface Harness (FIH) port
- 18 HP Jetdirect Fast Ethernet embedded print server
- 19 V.34 fax modem port



With your HP LaserJet M5035xs MFP, you get these additional features over HP LaserJet M5025 MFP series

- 3 Automatic 30-page stapler/stacker with a 500-sheet output bin
- 4 Automatic two-sided printing unit
- 6 Integrated three by 500-sheet input trays
- 9 Side door access to the print cartridge

* Plus the ability to expand with solutions (optional)

Maximise your investment —HP accessories



Automatic two-sided printing unit—save time with the automatic two-sided printing unit



Input trays—Add input capacity with a 500-sheet tray with storage cabinet or integrated three by 500-sheet trays



HP LaserJet MFP Analog Fax Accessory quickly and securely processes documents



HP Jetdirect 635n IPv6/IPsec Print Server with the latest in network security



HP Digital Sending Software lets you digitally capture paperbased documentation for easy routing and storage



Additional memory—Add memory for up to 512 MB total

HP LaserJet M5025 MFP

HP LaserJet M5025 MFP shown

- 1 50-sheet reversing ADF supports two-sided copying and scanning
- 2 Colour flatbed scanner for scanning, copying and faxing jobs
- 3 New control panel design features a touch-screen graphical display
- 4 250-sheet output bin
- 5 Two 250-sheet input trays
- 7 100-sheet multipurpose tray 1
- 8 Right side access door
- 9 USB accessory connection
- 10 A powerful 460 MHz processor and 256 MB of standard memory (expandable up to 512 MB)
- 11 One open EIO slot
- 12 Hi-Speed USB 2.0 port
- 13 Security lock slot
- 14 Foreign Interface Harness (FIH) port
- 15 HP Jetdirect Fast Ethernet embedded print server (RJ-45 port)
- 16 V.34 fax modem port*



With your HP LaserJet M5025 MFP, you get these additional features over HP LaserJet M5035 MFP series

- 6 Upper-right access door to the print cartridge
- 16* optional analog fax accessory

Maximise your investment —HP accessories



Automatic two-sided printing unit—save time with the automatic two-sided printing unit



Input trays—Add input capacity with a 500-sheet tray with storage cabinet or integrated three by 500-sheet trays



HP LaserJet MFP Analog Fax Accessory (optional) quickly and securely processes documents



HP Jetdirect 635n IPv6/IPsec Print Server with the latest in network security



Additional memory—Add memory for up to 512 MB total

Helping you get even more from your MFP

—solutions to enhance productivity and performance

HP Web Jetadmin

This web-based print management solution helps you discover devices on the network and facilitates the pro-active management of devices. It also provides you “supply low” alerts, and enables remote monitoring and troubleshooting as usage report generation.

HP Universal Print Driver— One Driver for all¹

Available in your choice of HP PCL5 or HP postscript emulation, this unified driver for HP enterprise customers ensures easy driver deployment and management. It also helps apply print rules to all users on the network.

Job Accounting Solutions (MegaTrack²/MIPA²/EasyReport²)

Manage your print environment more efficiently with two real-time monitoring and control offerings—MegaTrack and EasyReport—that help you carry out a variety of tasks: capture print, copy, and fax activities; allocate printing costs; restrict usage (e.g. set print quota on colour); and detailed usage reporting.

- **MegaTrack In Printer Agent (MIPA)** gives your business the ability to record and monitor printer and MFP activity directly at the device, providing a precise accounting of printing functions. It can also be used to track copying, faxing and scan-to-email functions.

Print Security (SecureJet²)

This hardware and firmware solution offers you greater control over the security of your printed documents. It helps you secure sensitive print jobs against hacking during LAN transmission and authenticate users to ensure that only the right person gets the print job. It also lets you retrieve jobs from any SecureJet-enabled printer.

Document Capture Solutions

HP Digital Sending Software² (optional)—It allows you to authenticate users at device level—and send documents to email, folders, ftp, LAN-fax, printer or document OCR.

HP AutoStore² (optional)—It helps you transform documents and integrate MFPs into your company workflow. It also facilitates information capture, transformation and routing to your Knowledge Management System and enables direct scanning into enterprise databases and applications.

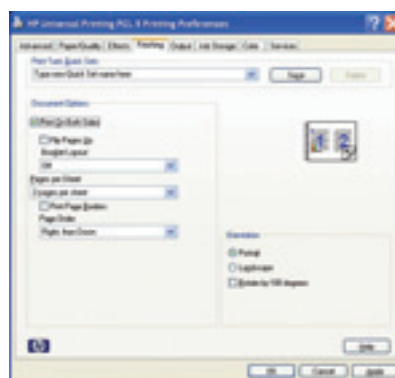
HP Web Jetadmin process

From standard web browser:

- Track usage by user
- Install firmware
- Configure device
- Conduct remote diagnostics
- Organise devices



Universal Print Driver



¹ For supported HP printers only.

² Solutions available with M5035 MFP series only.

100 million HP LaserJets shipped



No other company has supplied more printers to more people than HP. For more than 20 years now, HP has introduced an ever-widening range of innovative laser printing products. And now, HP celebrates the shipment of the 100 millionth HP LaserJet printer. HP printers offer proven reliability, award-winning service and support, and the broadest portfolio of printing solutions in the industry. All of which means you can count on the legendary quality and reliability of HP LaserJet printers.

HP Smart Printing—helping you save time and money

Interactive HP Smart Printing Technology¹ in the HP print cartridge and device makes printer maintenance easier, faster and more cost-effective. It optimises print quality and reliability throughout cartridge life, sends alerts when supplies are low and provides pages remaining data, and enables convenient reordering of supplies through HP SureSupply².



¹ Using genuine HP supplies ensures availability of all HP printing features.

² Programme availability may vary by country. Internet access required. For more information, visit www.hp.com/learn/suresupply

HP award-winning service and support

—ensuring low Total Cost of Ownership and peace of mind

HP's wide spectrum of Print Services offers you several efficient, flexible and cost-effective ways to manage output. Designed to be both affordable as well as fully scalable, these services range from assessment and strategy to complete outsourced management.

Support services



Hardware repair services for HP printer products. Billed up front including:

- On-site
- Exchange
- Installation
- Technical phone support

When you need:

Reliable hardware repair service and access to technical phone support only.

It includes:

- Hardware repair

Smart Print Services



A simple contract in a single, monthly invoice includes printers, supplies and support services based on actual device usage.

When you need:

A hassle-free acquisition method, monthly payment, simple contract with printers, supplies, and repair service.

It includes:

- Hardware repair
- Supplies fulfillment
- Choice of Single Function & Multifunction printers
- Leasing
- Maintenance kits

Managed Print Services



A comprehensive, scalable portfolio of services that can be easily customised to meet your specific requirements for an output strategy.

When you need:

Maximisation of your IT resources, cost control and optimisation of your output infrastructure.

It includes:

- Assessment and design services
- Onsite management services
- Deployment services
- Flexible payment models
- Choice of Single Function & Multifunction printers
- Supplies replenishment
- Remote monitoring

Excellent durability and reliability—HP has consistently received the top grade in PC Magazine Readers' Choice Award for service and reliability 14 years in a row¹.

That's the kind of assurance you get with HP Printers.

¹ September 2005 PC Magazine Annual Reader Satisfaction Survey



PC Magazine Readers' Choice Award for service and reliability for 14 years in a row.

PC Magazine Readers' Choice Award Logo is a trademark of Ziff Davis Publishing Holdings Inc. Used under license.

Technical specifications



HP LaserJet M5035 MFP (Q7829A)



HP LaserJet M5035x MFP (Q7830A)



HP LaserJet M5035xs MFP (Q7831A)



HP LaserJet M5025 MFP (Q7840A)

Print and copy speed¹	M5035 MFP series—Up to 35 ppm, letter (33 ppm, A4); M5025 MFP—Up to 25 ppm, letter and A4
First page out	Less than 10 seconds
Resolution	HP FastRes 1200, HP ProRes 1200 (1200 x 1200 dpi), RET (Resolution Enhancement technology)
Features	Copying: Up to 1000 multiple copies, reduce/enlarge from 25 to 400% (from scanner glass), two-sided copying (M5035x/M5035xs MFP only), contrast adjustments, mixed originals, image adjustment, paper selection, content orientation, pages per sheet, booklet format, optimise text/picture, job build, edge to edge; Scanning: Colour flatbed scanner or ADF; scan input modes: front-panel scan, copy, fax (optional) e-mail; file types: PDF, JPG, TIFF, MTIFF; Faxing: M5035 & M5025 MFP only—Optional faxing accessory; M5035x/M5035xs MFP—300 dpi, 33.6 kbps, auto fax reduction, fax forwarding, fax polling, broadcasting, speed dial, junk barrier, remote retrieval, auto redialing, Windows® faxing Digital sending: M5035 MFP series—Send-to-email, send to network folder, LDAP and SMTP authentication, LDAP addressing; file formats: PDF, JPG, TIFF, MTIFF; M5025 MFP—Send-to-email file formats: PDF, JPG, TIFF, MTIFF; Optional features: Digital Sending Software, HP AutoStore
Processor	460 MHz
Memory/storage	256 MB RAM (fixed), expandable to 512 MB via one open; DDR DIMM slot; Memory Enhancement technology (MEt); 40 GB hard disk
Duty cycle²	Up to 200,000 pages per month
Paper	Input: 100-sheet multipurpose tray 1, 250-sheet tray 2 and 3, 50-sheet two-sided reversing Automatic Document Feeder (ADF); M5035x MFP—inclusive of 500-sheet input tray 4 with storage cabinet; M5035xs MFP—inclusive of integrated three by 500-sheet trays 4, 5 and 6; Output: 250-sheet output bin, M5035x MFP—inclusive of automatic two-sided printing unit, M5035xs—inclusive of automatic two-sided printing unit, 30-sheet automatic stapler/stacker with 500-sheet output bin; Sizes: 100-sheet multipurpose tray 1: 76 x 127 mm to 312 x 470 mm (3 x 5 inches to 12.28 x 18.5 inches); 250-sheet tray 2: 148 x 210 mm to 297 x 364 mm (5.83 x 8.27 inches to 11.7 x 14.33 inches); 250-sheet tray 3, M5035 MFP series—integrated three by 500-sheet trays 4, 5 and 6: 148 x 210 mm to 297 x 432 mm (5.83 x 8.27 inches to 11.7 x 17 inches); Automatic Document Feeder: 138 x 210 mm to 297 x 432 mm (5.43 x 8.27 inches by 11 x 17 inches); M5035 MFP series—Automatic stapling; A4, letter, automatic stacking: A4, letter, B4-JIS, B5-JIS, legal, executive, A5, A3, ledger; Flatbed scanner: 215.9 x 279.4 mm to 297 x 432 mm (8.5 x 11 inches to 11.7 x 17 inches); Weight: Input trays and finishing devices: 60 to 120 g/m ² (16 to 32 lb); Automatic Document Feeder (ADF): 60 to 105 g/m ² (16 to 28 lb); Types: Paper (plain, printed, letterhead, prepunched, bond, recycled, colour, rough), transparencies, labels, envelopes, card stock
Connectivity	Interfaces: One HP Jetdirect Fast Ethernet embedded print server, one Foreign Interface Harness (FIH), one USB type A port, one USB type B port, one open EIO slot; M5035/M5025 MFP—optional analog fax accessory; Languages: HP PCL6, HP PCL5, HP postscript level 3 emulation, PDF printing (v 1.4); Fonts: 80 scalable TrueType fonts; Client operating systems: Full software installation: Windows® XP (32-bit), Windows® Server 2003 (32-bit), Windows® 2000; printer driver only: Windows® XP (64-bit) (Web only); Windows® Server 2003 (64-bit) (Web only); Linux (Web only); UNIX model scripts (Web only); Mac OS X v10.2.8, v10.3, v10.4 and later; Network: IPv6: ³ DHCPv6, HTTP, HTTPS, Port 9100, LPD, IIP, Secure IIP, MLDv6, ICMPv6 IPv4: FTP, IPP, Secure IPP, Auto-IP, Apple Bonjour Compatible, Telnet, SLP, IGMPv2, BOOTP/DHCP, WINS, SNMPv1/v2c/v3, TFTP, HTTP, HTTPS, Port9100, LPD Other: IPX/SPX, DLC. LLC, Apple
Security	Private print, HP Secure Storage Erase, HP JetDirect—802.1x for wired networks, SNMPv3 and HTTPS, and Secure IPP (IPP-S) and IPSec
Dimensions (w x d x h)	M5035/M5025 MFP—610 x 571 x 584 mm (24 x 22.5 x 23 inches); M5035x MFP—743 x 743 x 997 mm (29.1 x 29.2 x 40.1 inches) M5035xs MFP—743 x 743 x 1183 mm (29.1 x 29.1 x 46.5 inches)
Weight	M5035/M5025 MFP—55 kg (121 lb); M5035x MFP—93 kg (192 lb); M5035xs MFP—97 kg (213 lb)
Environmental ranges	Temperature: Operating: 17 to 25° C (63 to 77° F); Storage: 13 to 38° C (50 to 99° F); Relative humidity: 30% to 70%, non-condensing
Acoustics⁴	Power emissions: Active: 6.6 B(A); Active copy or scan: 7.1 B(A); Ready: inaudible

Technical specifications



HP LaserJet M5035 MFP (Q7829A)



HP LaserJet M5035x MFP (Q7830A)



HP LaserJet M5035xs MFP (Q7831A)



HP LaserJet M5025 MFP (Q7840A)

Power requirements⁵	110-volt models: 115 to 127 V (\pm 10 percent), 60 Hz (\pm 2 Hz); 12 amp; 220-volt models: 220 to 240 V (\pm 10 percent), 50 Hz (\pm 2 Hz); 6 amp
Power consumption⁵	Active: 600 watts; Active copy: 1265 watts; Ready: 28 watts; PowerSave: 24 watts; Off: 0.1 watt; (Energy Star [®] compliant)
EMC compliance	CISPR 22:1993/EN 55022:1994 Class A, EN 61000-3-2:2000, EN 61000-3-3:1995, EN 55024:1998, FCC Title 47 CFR, Part 15 Class B/ICES-003, Issue 4/GB9254-1998, GB17625.1-2003, EMC Directive 89/336/EEC and the Low Voltage Directive 73/23/EEC, and carries the CE-Marking accordingly
Safety compliance	Argentina (TÜV S Mark-Rs.92/98/Ds.1009/98), Australia (AS/NZ 3260), Canada (cUL-CAN/CSA C22.2 No.60950-1-03), China (GB4943), Czech Republic (CSN-IEC 60950-1; IEC 60825-1), Estonia (EEI-EN60950-1; IEC 60825-1), EU (CE Mark-Low Voltage Directive 73/23/EEC), Germany (TÜV- EN60950-1; IEC 60825-1), Hungary (MEEI- IEC 60950-1; IEC 60825-1), Lithuania (LS- IEC 60950-1; IEC 60825-1), (Russia (GOST-R50377), Slovakia (IEC 60950-1; IEC60825-1), Slovenia (SQI- IEC 60950-1; EN60825-1), South Africa (IEC 60950-1; IEC60825-1), USA (UL-UL 60950-1; FDA-21 CFR Chapter 1 Subchapter J for lasers), Class 1 Laser/LED Product
Warranty	One-year, next day, on-site limited warranty plus free phone support during warranty
HP SureSupply enabled	To learn more, please visit www.hp.com/go/SureSupply
What's in the box	All models include: power cord, original HP print cartridge, control panel overlay, Getting Started Guide, Wall Poster, software/documentation CD; M5035x—automatic two-sided printing unit, cabinet with 500-sheet input tray; M5035xs—automatic two-sided printing unit, input device with three 500-sheet trays, stapler/stacker

- Print speed may slow down on large jobs using letter-landscape and ledger sized paper. The degree of speed reduction will depend upon paper weight and fuser mode, and is determined by the maximum allowable fuser temperature. Copy speed specifications are based on long-edge feed (landscape) scanning through the ADF.
- Duty cycle is defined as the maximum number of pages per month of imaged output. This value provides a comparison of product robustness in relation to other HP LaserJet or HP Color LaserJet devices, and enables appropriate deployment of printers and MFPs to satisfy the demands of connected individuals or groups.
- IPv6 is only supported with Microsoft Server 2003 and Windows XP (print only).
- Configuration tested: base model, simplex printing, A4 paper at an average of 25 ppm (for M5025 MFP); base model, simplex printing, A4 paper at an average of 35 ppm (for M5035 MFP series).
- Power requirements are based on the country/region where the printer is sold. Do not convert operating voltages. This will damage the printer and void the product warranty.
- Only available with M5035 MFP series.

For more information, call your local Hewlett-Packard sales office or your nearest HP authorised dealer or visit us at www.hp.com

HP customer information centre (for product information)

Australia	13 23 47
China	800 820 2255
Hong Kong	800 93 8855
India	1600 425 4999 (from MTNL/BSNL LAN line) 3030 4499 (from mobile)
Indonesia	0800 1111 222
Korea	080 703 0700
Malaysia	1800 88 4848
New Zealand	0800 733 547
Philippines	1800 1441 6688
Singapore	1800 278 8100
Taiwan	0800 236 686
Thailand	+662 353 9000
Vietnam	+848 823 6215

HP customer care centre (for post-sales service)

Australia	13 10 47
China	800 810 3888
Hong Kong	+852 3002 8555
India	1600 112 267
Indonesia	+62 21 350 3408
Korea	+82 23270 0700
Malaysia	1800 805 405
New Zealand	0800 449 553
Philippines	+63 2 867 3551
Singapore	+65 6 272 5300
Taiwan	+886 2 8722 8000
Thailand	+662 353 9000
Vietnam	+848 823 4530

For the following countries, please fax your queries to: +65 6275 6707

• Bangladesh • Bhutan • Brunei • Cambodia • Maldives • Nepal • Pakistan • Sri Lanka



Ordering information

Product	
Q7829A	HP LaserJet M5035 MFP
Q7830A	HP LaserJet M5035x MFP
Q7831A	HP LaserJet M5035xs MFP
Q7840A	HP LaserJet M5025 MFP
Paper handling	
Q7549A	Automatic two-sided printing accessory
Q3701A	Analog fax accessory
Q7834A	500-sheet input tray 4 with storage cabinet
Q7835A	Integrated three by 500-sheet input trays 4, 5 and 6
Supplies	
Q7570A	HP LaserJet Black Print Cartridge with Smart Printing Technology. Average cartridge yield 15,000 standard pages
Connectivity	
J7960G	HP Jetdirect 625n Gigabit Ethernet internal print server
J7961G	HP Jetdirect 635n IPv6/IPv4 internal print server
J7951G	HP Jetdirect ew2400 external Fast Ethernet wired and wireless 802.11g print server
J7972G	HP 1284B Parallel Card
Memory	
Q7718A	128 MB 100-Pin DDR DIMM
Q7719A	256 MB 100-Pin DDR DIMM
J7989G	HP EIO Serial ATA High Performance Hard Disk
Software and accessories	
T1936AA [*]	HP Digital Sending Software
T1943AA [*]	HP AutoStore software
Solutions	
See the Global Solutions Catalog: www.hp.com/go/gsc	
HP papers	
Asia Pacific: www.hp.com/apac/printingsupplies	
Asia: 65-6253-8500	
Australia and New Zealand: 61-2997-22991AR	

HP Customer Care

HP Customer Care's award-winning support, reliability and the exciting solutions are available via phone, Customer Care Centre and also online at www.hp.com/support.

To start enjoying all the benefits provided for you, log on to www.hp.com/apac/register to register your HP product online.

^{*} Average cartridge yield: 18,000 standard pages. Declared yield value in accordance with ISO/IEC 19752.

